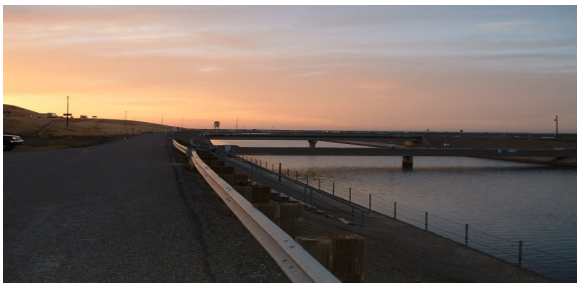


RIVER AND FISHING ACCESSES

Basso Bridge is located off Route 132 west of the town of La Grange, on the upper reach of the Tuolumne River. A part of the La Grange Regional Park, the river access is approximately two acres in size and includes a parking lot, restrooms, informal boat launch, gravel beach area for swimming, trails & pathways, barbecues, picnic tables and handicapped access. You may fish only with barb-less hooks, with synthetic baits and tackles. Trout may not be taken and must be released. **Basso Bridge Fishing Access is closed from Oct. 16- Dec. 31 due to the salmon run.**



Delta Mendota is located between Zacharias Road and Rogers Road on the Delta Mendota Canal. The access is approximately eighty-seven acres of land and thirty on acres of water with gravel levee roads on the east side of the canal. There is one chemical toilet available.

Fox Grove is located on the Tuolumne River at Geer Road. The river access is approximately sixty-four acres in size on one mile of river frontage with parking area, restrooms, boat ramp, swimming, barbecues, picnic tables, and handicapped access. You may fish only with barb-less hooks, with synthetic baits and tackles. Trout may not be taken and must be released. **Fox Grove Fishing Access is closed from Oct. 16- Dec. 31 due to the salmon run.**



Las Palmas is located on the San Joaquin River east of Patterson off of route J17 (Las Palmas / West Main Street). The three acres park has one mile of river frontage with parking lot, restrooms, concrete boat ramp, barbecues, picnic tables and handicapped access.

Niels Hansen is located west of the town of Patterson near I-5 and Sperry Avenue. The fishing access is approximately one-half acre in size with a small parking area and access to both sides of the Delta Mendota Canal. There are two chemical toilets available.



RIVER AND FISHING ACCESSES



Orestimba is located northwest of the town of Newman at the end of Orestimba Road. The fishing access has a parking lot, access to both sides of the California Aqueduct, as well as seasonal Orestimba Creek. There are two chemical toilets available.

Riverdale is located on the Tuolumne River off Parkdale Drive, north west of the intersection of Hatch Road and Carpenter Road. The access is approximately three acres in size with a river oriented put-in facilities aimed at non-motorized or car top boats.



Shiloh is located on Shiloh Road, providing access to the Tuolumne River near its confluence with the San Joaquin River. The access is approximately two acres in size with swimming and two chemical toilets available.

Turlock Lake is located on La Verne Potts Road off of Lake Road at the inlet of the Turlock Reservoir. The access is approximately twenty-seven acres with parking area, restrooms, boat ramp, trails & pathways, picnic tables and handicapped



TUOLUMNE RIVER

