

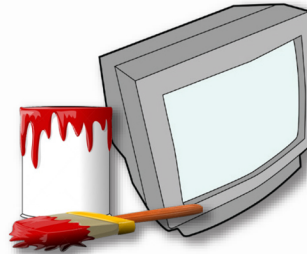
Business & Multi-Family Recycling



Types of
Material
to Recycle

- Clean, dry paper
- Cardboard and chipboard
- Plastic and glass bottles and jars
- Metal and aluminum cans
- Metal containers and empty aerosol cans
- Plastic bags and dry cleaner bags

DON'T PUT
In the
Recycling Bin



- Rubber tires
- Hazardous waste - paint, batteries, antifreeze, pesticides, cleaning products, appliances, cell phones, TVs, computer monitors
- Broken glass
- Contaminated or wet paper
- Plastic hangers
- Do not place rubber tires or hazardous waste in recycling bins.



For information on proper disposal or recycling of these materials, go to: www.stanislausrecycles.org

Don't Trash
Stanislaus County!



Only Rain Down the Drain!

Stormwater pollutants find their way into where we fish, what we drink and where we swim. Everything that goes into our storm drains makes its way straight to our river and streams and stormwater pollution is our biggest source of water pollution.

**It All Adds Up.
It All Comes Back.
You Are The Solution
To The Pollution!**





REDUCE • RECYCLE • REUSE

WHAT YOU NEED TO KNOW ABOUT Business & Multi-Family RECYCLING

Why Recycle?

- State law now requires all businesses and multi-family units that generate 4 or more cubic yards of waste weekly to recycle.
- Recycling may provide opportunities to save money.
- Recycling helps conserve resources and extends the life of California's landfills. It also helps create a healthy environment for our community and future generations.

How To Get Started

- It's easy to recycle at your complex or business. Make sure your business or manager has arranged for recycling services (see below for more information).
- Use the list on the other side of this flyer to help employees and residents learn what items can be recycled.
- Separate recyclable items from the trash.
- Place your recyclable items in external recycling containers for collection.
- Note: any business or individual may donate, sell and/or otherwise arrange for pickup of recyclable materials.

Where To Go For More Information

To learn more, call **(209) 525-6700**, Stanislaus County Environmental Resources or visit www.calrecycle.ca.gov/recycle/commercial

Contact:

Bertolotti Disposal..... (209) 537-6911
Gilton Solid Waste (209) 527-3781
Turlock Scavenger (209) 668-7274

Visit:

www.stanislausrecycles.org for more information from Stanislaus County Department of Environmental Resources

For additional general information about recycling and waste reduction, visit the California Department of Resources Recycling and Recovery (CalRecycle) at: www.calrecycle.ca.gov

