

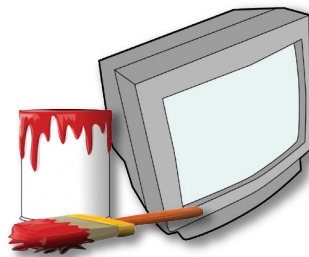
# Business & Multi-Family Recycling



Types of Material to Recycle

- Clean, dry paper
- Cardboard and chipboard
- Plastic and glass bottles and jars
- Metal and aluminum cans
- Metal containers and empty aerosol cans

DON'T PUT In the Recycling Bin



- Broken glass
- Contaminated or wet paper
- Plastic hangers

- Rubber tires
- Hazardous waste - paint, batteries, antifreeze, pesticides, cleaning products, appliances, cell phones, TVs, computer monitors
- Do not place rubber tires or hazardous waste in recycling bins.



For information on proper disposal or recycling of these materials, go to: [www.stanislausrecycles.org](http://www.stanislausrecycles.org)

**Don't Trash Stanislaus County! Recycle Bottles and Cans.**



**Only Rain Down the Drain!**

Stormwater pollutants find their way into where we fish, what we drink and where we swim. Everything that goes into our storm drains makes its way straight to our river and streams and stormwater pollution is our biggest source of water pollution.

**If All Adds Up. It All Comes Back. You Are The Solution To The Pollution!**





REDUCE • RECYCLE • REUSE

# WHAT YOU NEED TO KNOW ABOUT Business & Multi-Family RECYCLING

## Why Recycle?

- Since 2012, state law requires all businesses that generate 4 or more cubic yards of waste weekly and all multi-family complexes of 5 or more units to recycle.
- Recycling may provide opportunities to save money.
- Recycling helps conserve resources and extends the life of California's landfills. It also helps create a healthy environment for our community and future generations.

## How To Get Started

- It's easy to recycle at your complex or business. Make sure your business, complex owner, or manager has arranged for recycling services (see below for more information).
- Use the list on the other side of this flyer to help employees and residents learn what items can be recycled.
- Separate recyclable items from the trash.
- Place your recyclable items in external recycling containers for collection.
- Note: any business or individual may donate, sell and/or otherwise arrange for pickup of recyclable materials.

## Where To Go For More Information

To learn more, call (209) 525-6700, Stanislaus County Environmental Resources or visit [www.calrecycle.ca.gov/recycle/commercial](http://www.calrecycle.ca.gov/recycle/commercial)

Contact:

**Bertolotti Disposal**..... (209) 537-6911

**Gilton Solid Waste** ..... (209) 527-3781

**Turlock Scavenger** ..... (209) 668-7274

Visit:

[www.stanislausrecycles.org](http://www.stanislausrecycles.org) for more information from Stanislaus County Department of Environmental Resources

For additional general information about recycling and waste reduction, visit the California Department of Resources Recycling and Recovery (CalRecycle) at: [www.calrecycle.ca.gov](http://www.calrecycle.ca.gov)

