

Stanislaus County

**2023-2031
Housing Element
Update**

October 2022

**Community Workshop #2
Site Inventory Map
Packet**

Thank you for attending the Stanislaus County’s Community Workshop for the 2023-2031 Housing Element Update on October 11, 2022! This packet contains maps of the nine unincorporated areas of Stanislaus County and the proposed housing opportunity sites to accommodate the County’s Regional Housing Needs Allocation (RHNA).

We ask you to review the maps on the following pages and provide your feedback. You can access the mapping exercise online at www.stancounty.com/housingelement.

Visit the Project website at <https://stancounty.com/housingelement>



Complete the online mapping exercise:

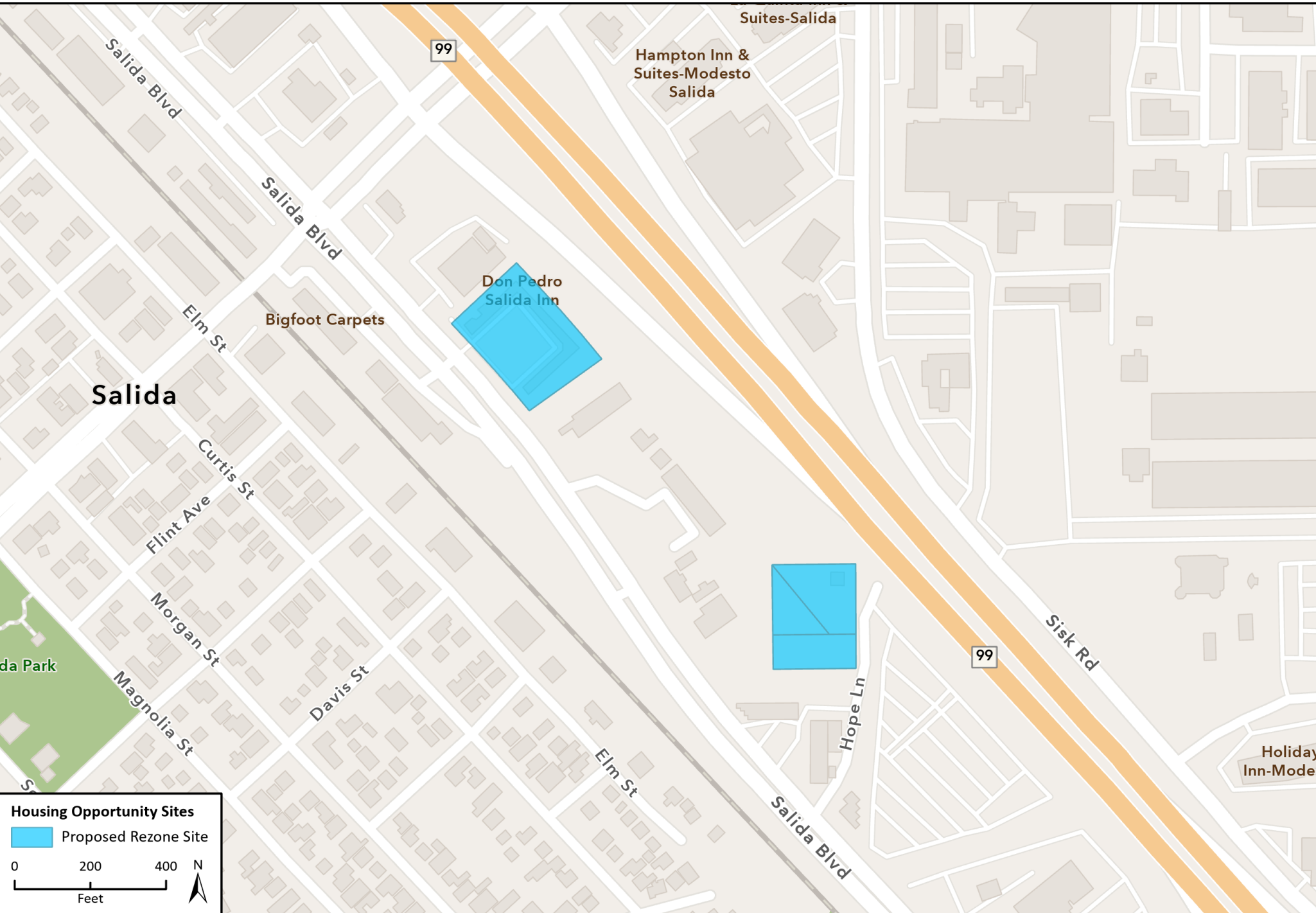
English: <https://storymaps.arcgis.com/stories/a054e2519e564c0d9a7b839d01254f77>

Spanish: <https://storymaps.arcgis.com/stories/295d9a3d70ce46d8873d6ccb17f28b82>

Contents

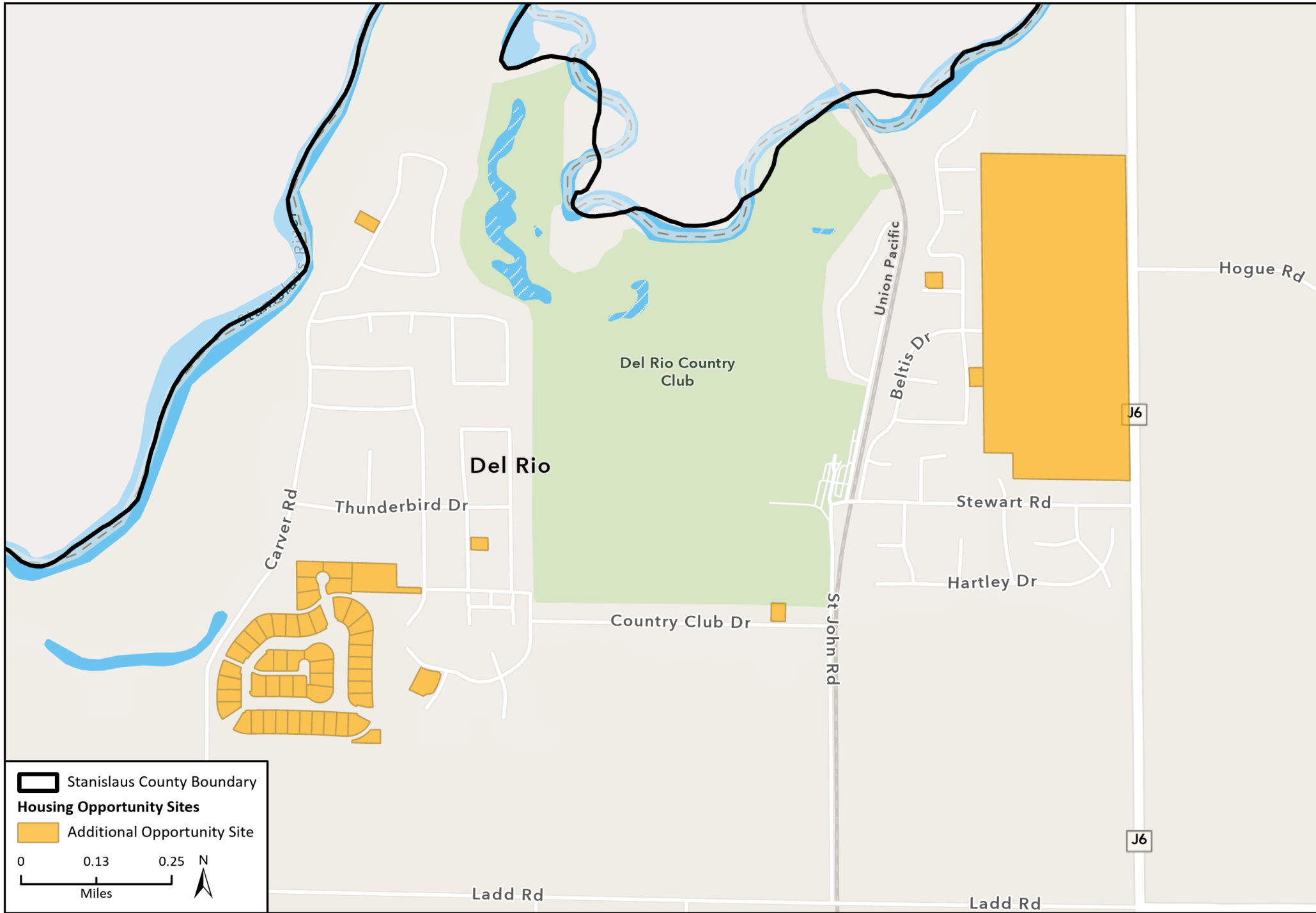
Salida	1
Del Rio	2
Empire	3
Modesto/Ceres	4
Keyes	5
Denair	6
Grayson & Westley	7
Diablo Grande	8
Hickman	9

Proposed Housing Sites in Salida



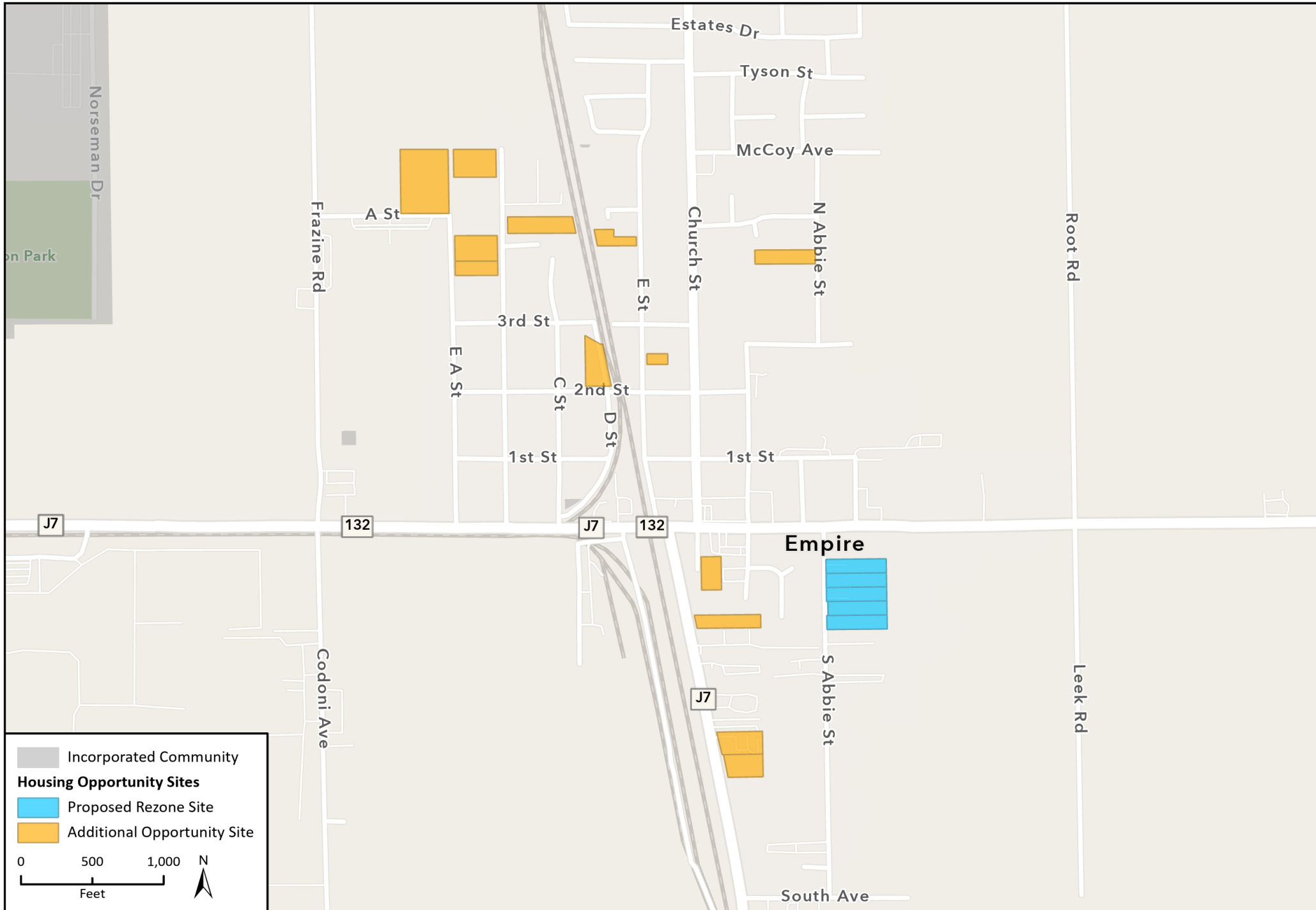
Basemap provided by Esri and its licensors © 2022.

Proposed Housing Sites in Del Rio



Basemap provided by Esri and its licensors © 2022.

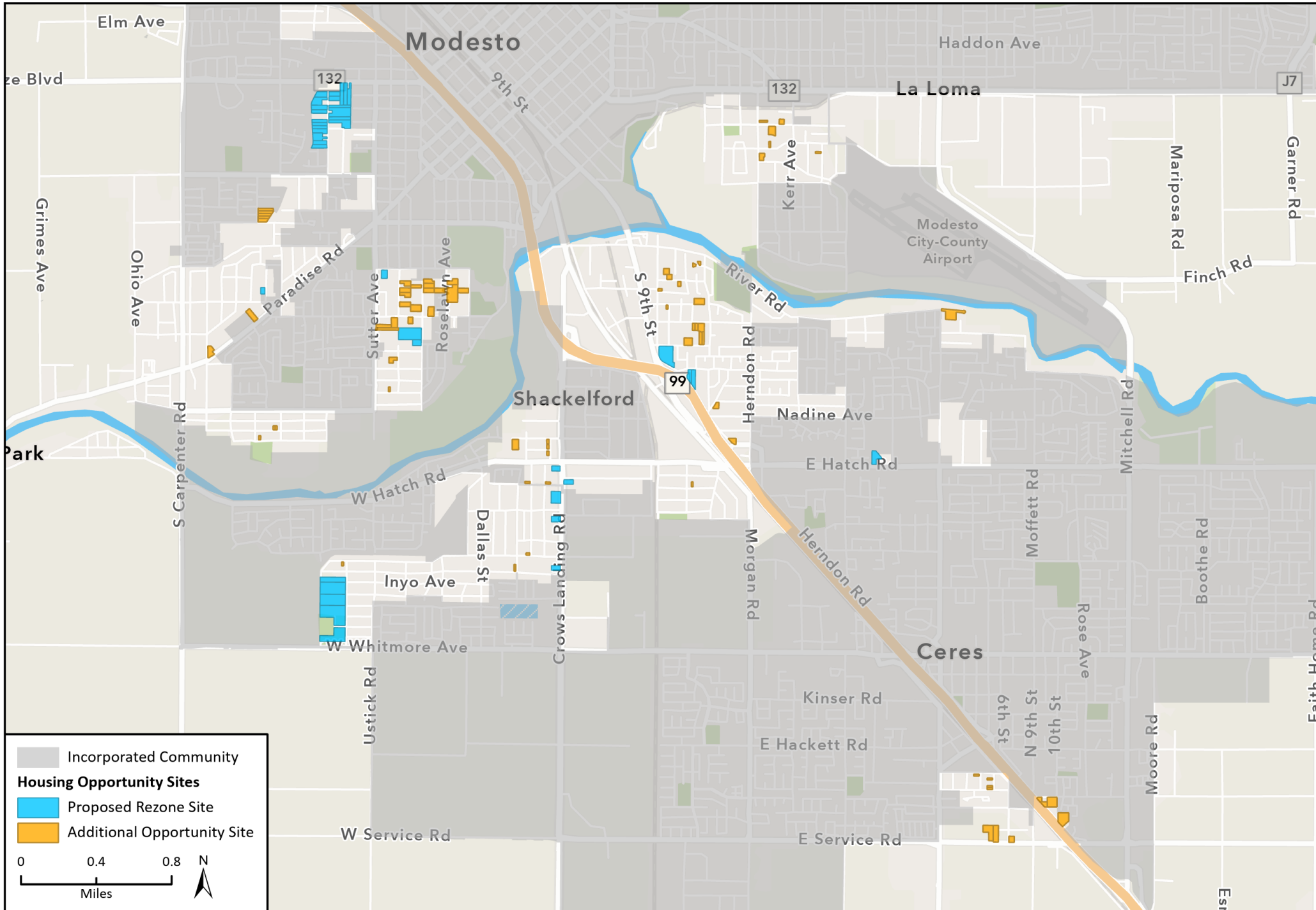
Proposed Housing Sites in Empire



Basemap provided by Esri and its licensors © 2022.

Stanislaus Outreach Package.aprx
Fig 3 Empire

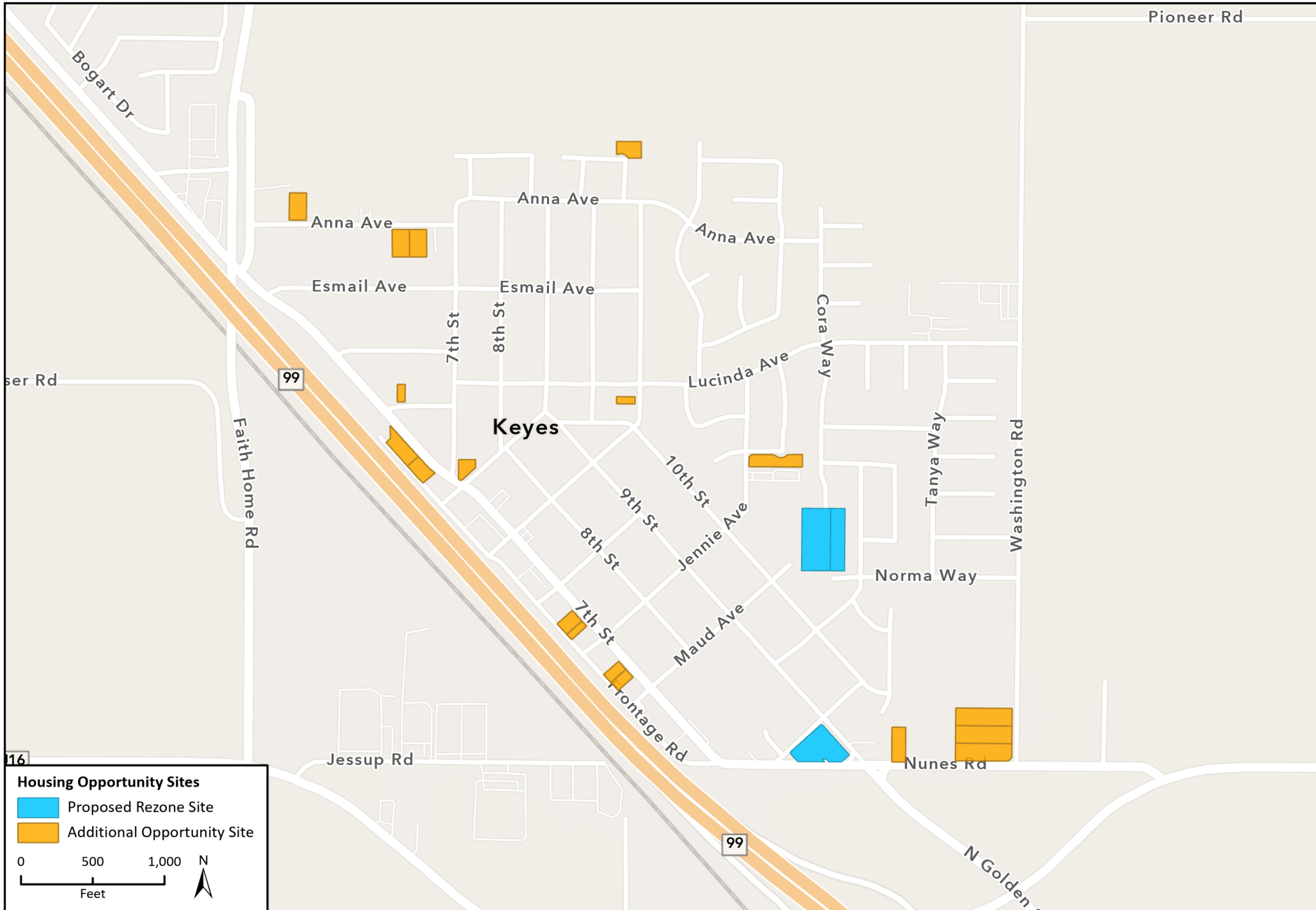
Proposed Housing Sites in the Modesto/Ceres area



Basemap provided by Esri and its licensors © 2022.

Stanislaus Outreach Package.aprx
Fig 4 Southwest Modesto

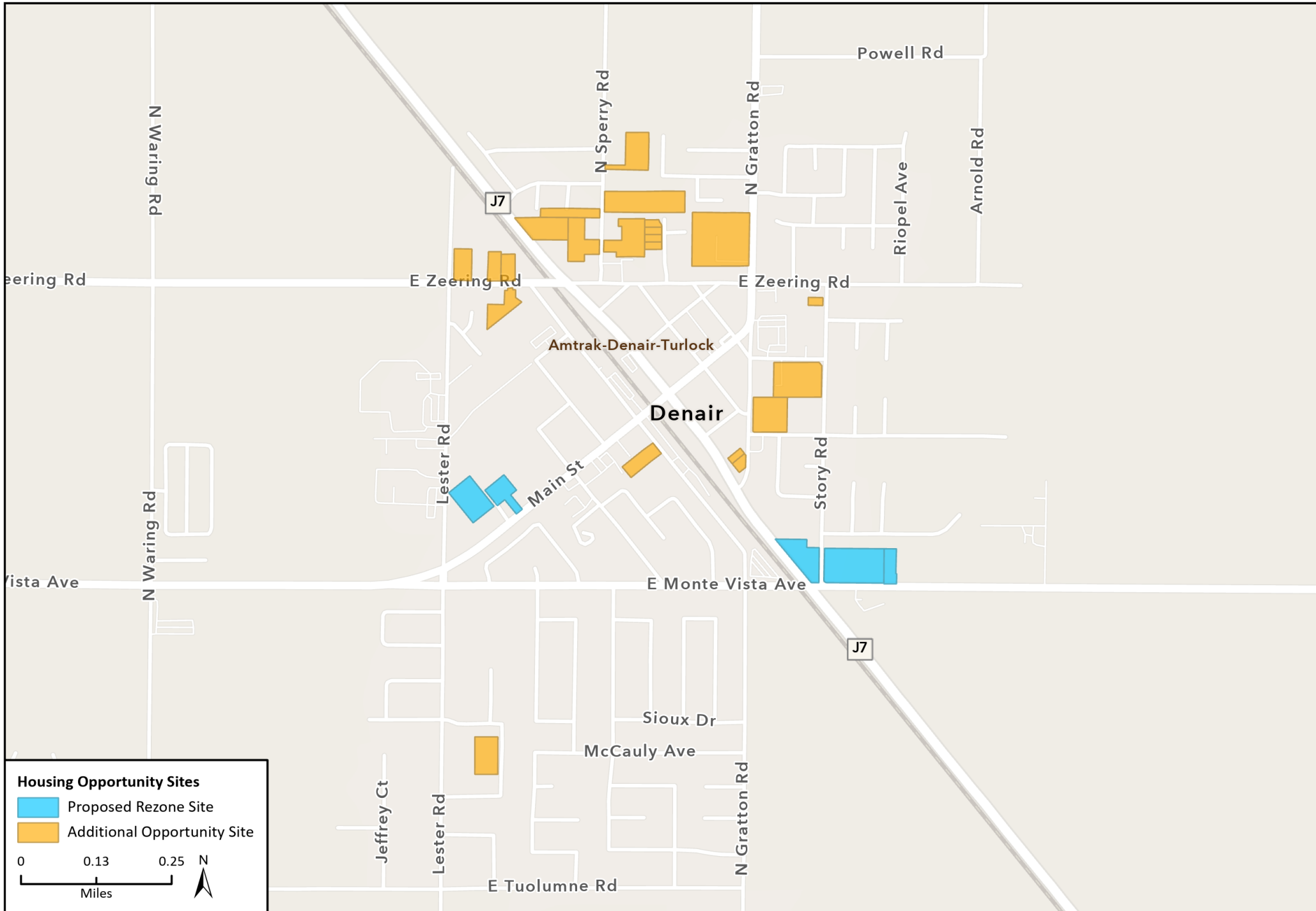
Proposed Housing Sites in Keyes



Basemap provided by Esri and its licensors © 2022.

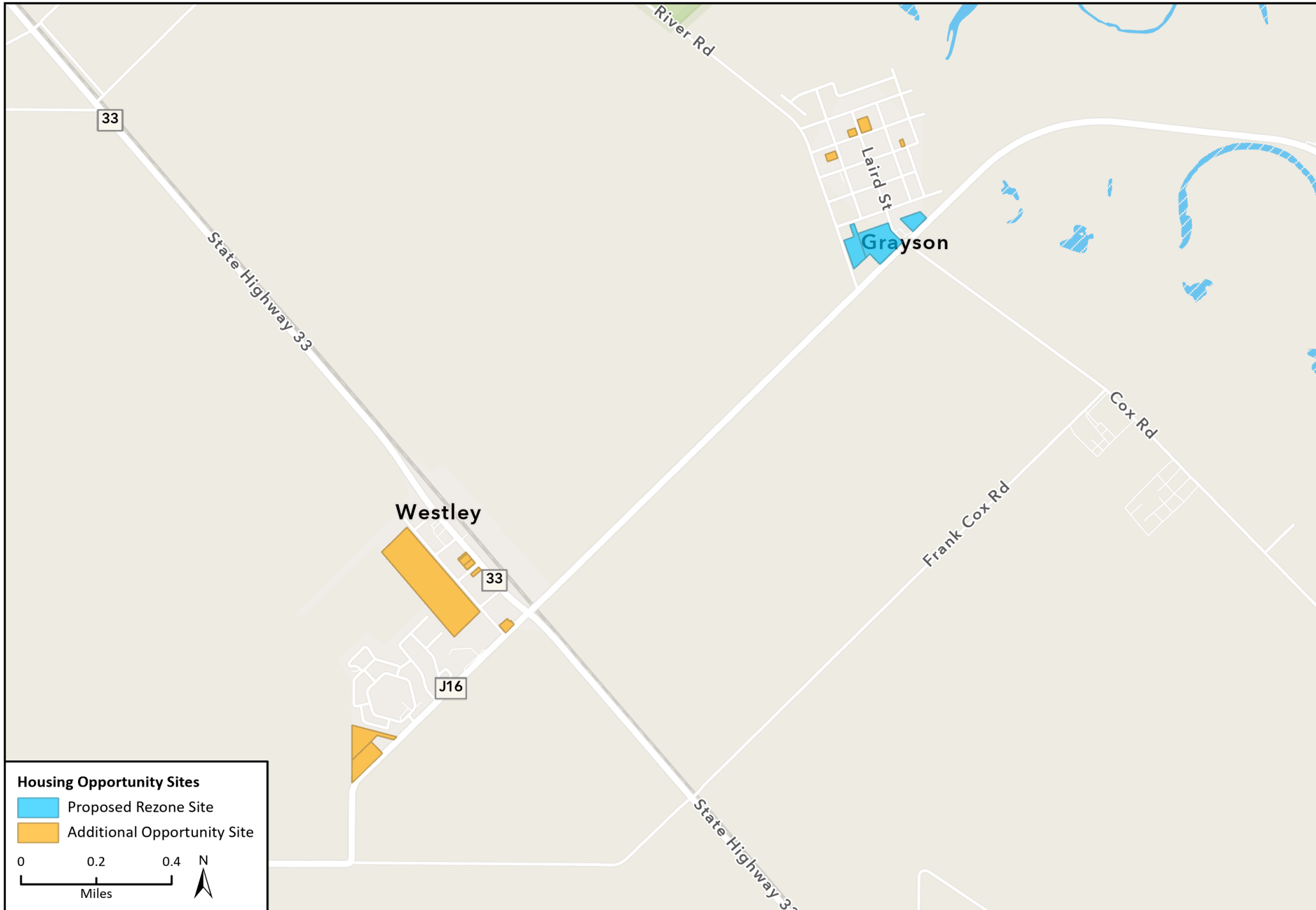
Stanislaus Outreach Package.aprx
Fig 5 Keyes

Proposed Housing Sites in Denair



Basemap provided by Esri and its licensors © 2022.

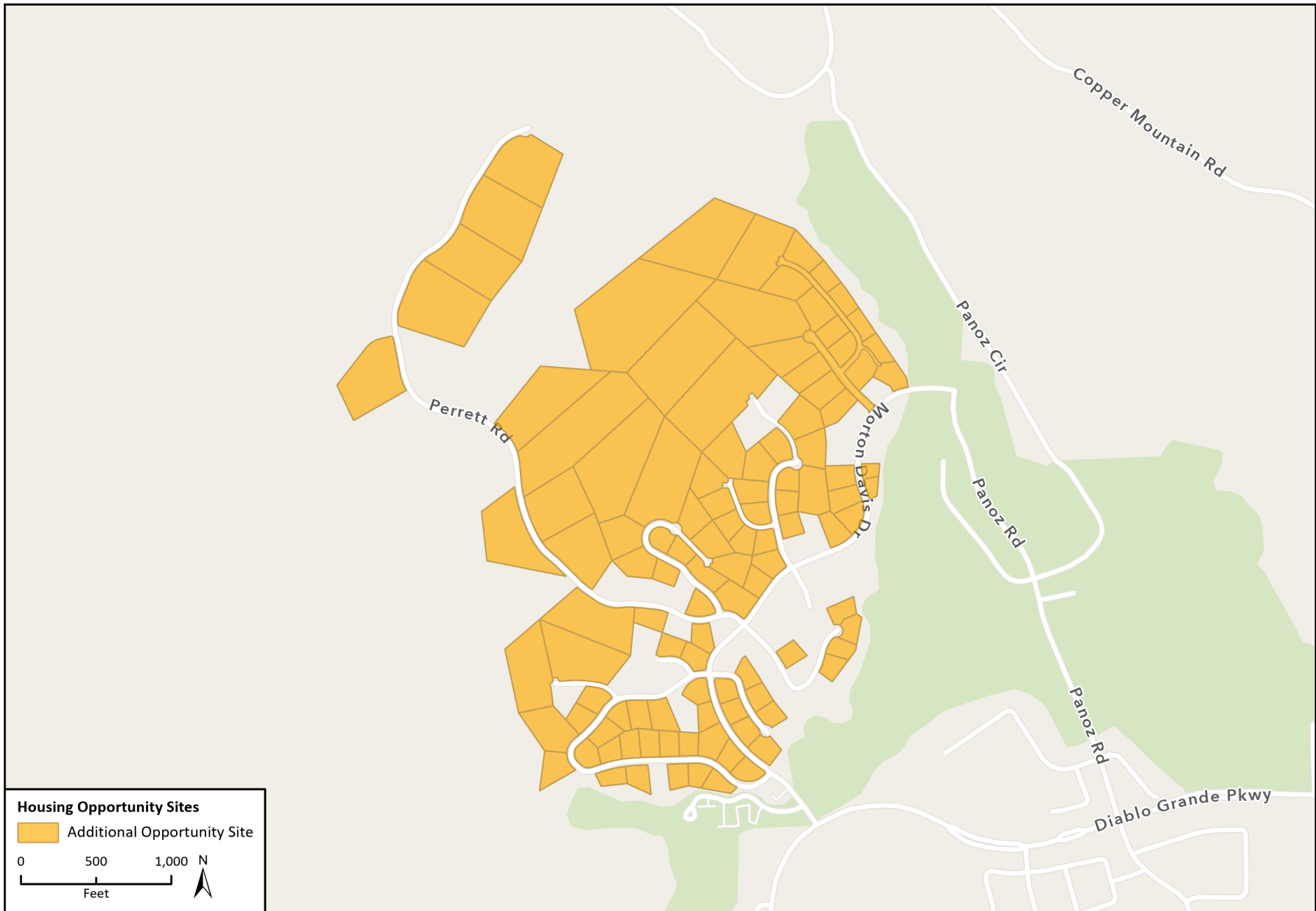
Proposed Housing Sites in Grayson & Westley



Basemap provided by Esri and its licensors © 2022.

Stanislaus Outreach Package.aprx
Fig 7 Grayson/Westley

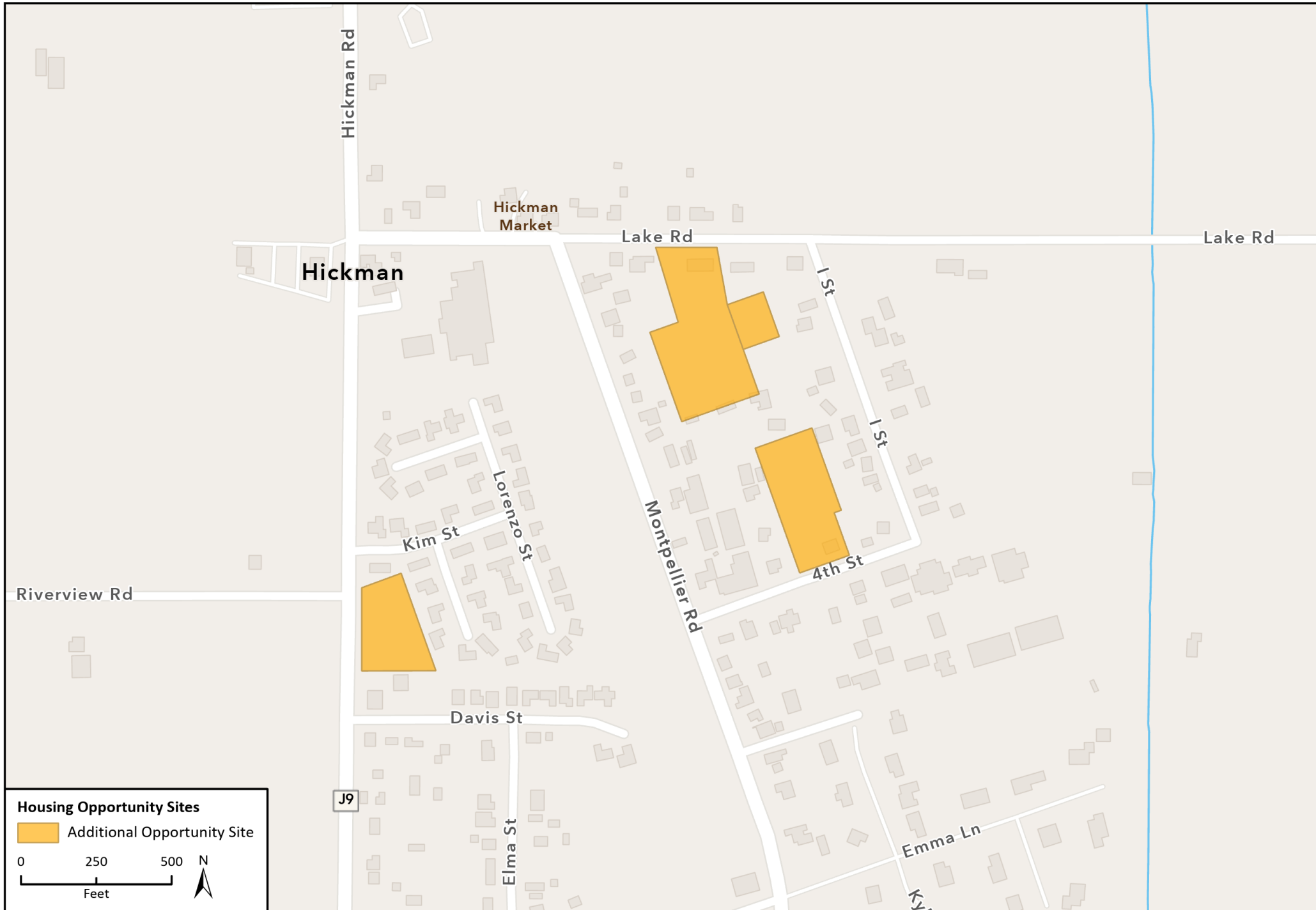
Proposed Housing Sites in Diablo Grande



Basemap provided by Esri and its licensors © 2022.

Stanislaus Outreach Package.aprx
Fig 8 Diablo Grande

Proposed Housing Sites in Hickman



Basemap provided by Esri and its licensors © 2022.