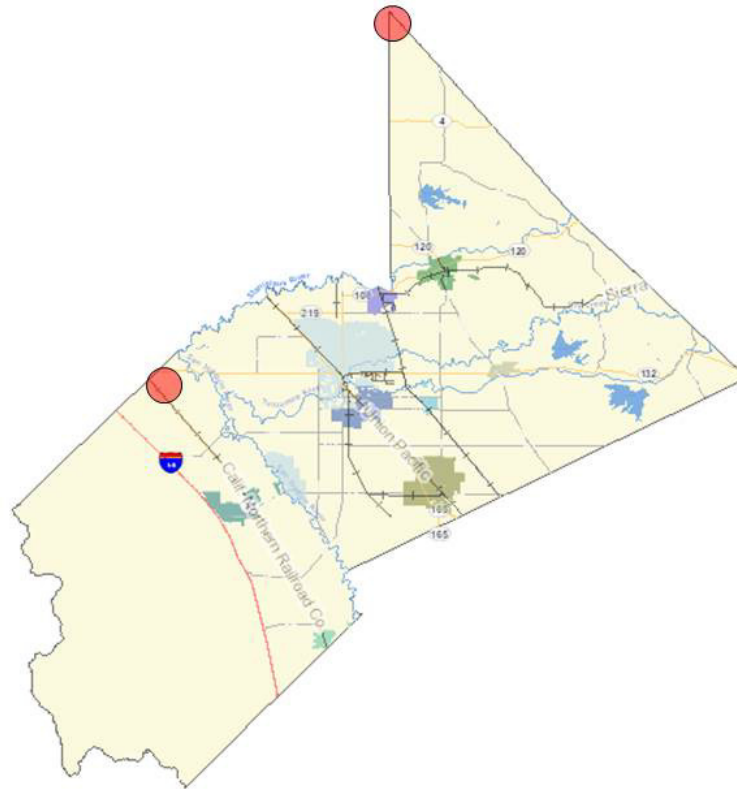


# APPENDIX III-A

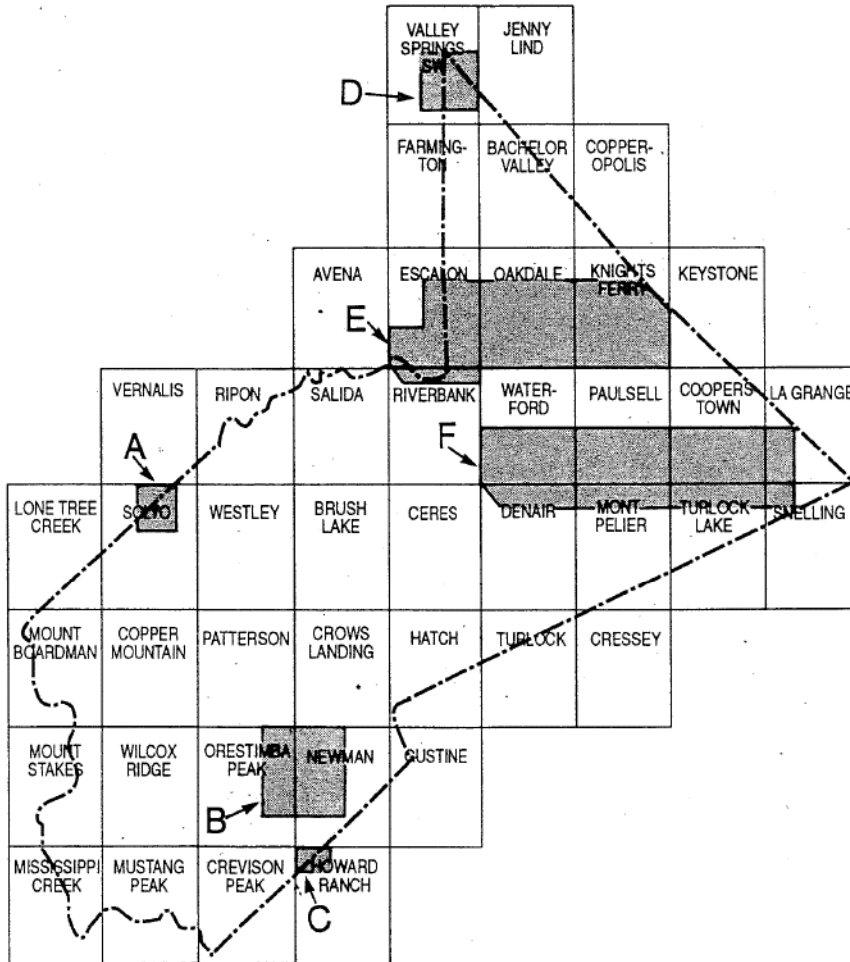
## AGGREGATE RESOURCE AREAS OF STANISLAUS COUNTY, CALIFORNIA

### Special Report No. 173 - Stanislaus County Aggregate Resources

Special Report No. 91-03, 160, and 199 are incorporated by reference, and cover the area in Stanislaus County highlighted in the red circles on the County map below. Map and Special Reports are available through the California Department of Conservation, Division of Mines and Geology.



***THIS PAGE INTENTIONALLY LEFT BLANK***



Index map of U.S.G.S. 7.5-minute quadrangles used to compile bases.

Topographic base maps by U.S. Geological Survey.



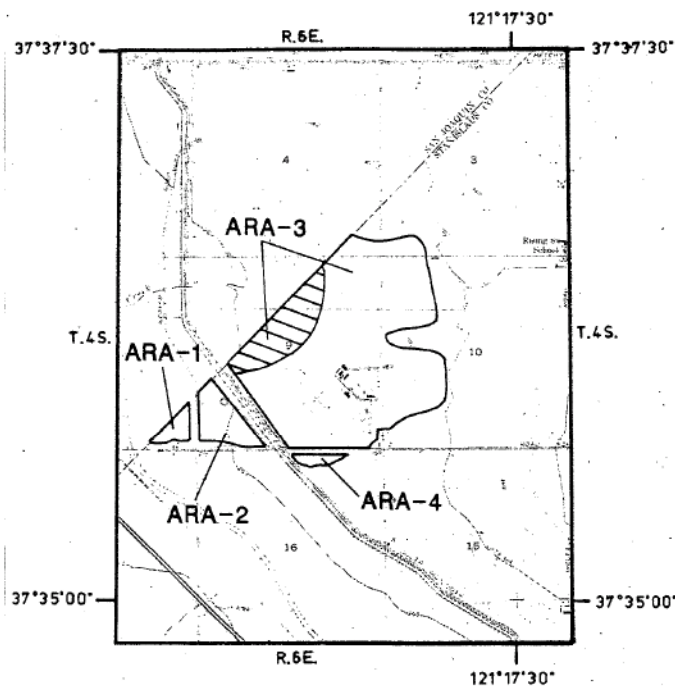
## AGGREGATE RESOURCE AREAS OF STANISLAUS COUNTY

State Division of Mines & Geology  
Special Report 173 (1993)

***THIS PAGE INTENTIONALLY LEFT BLANK***

# AGGREGATE RESOURCE AREAS OF STANISLAUS COUNTY

State Division of Mines & Geology  
Special Report 173 (1993)



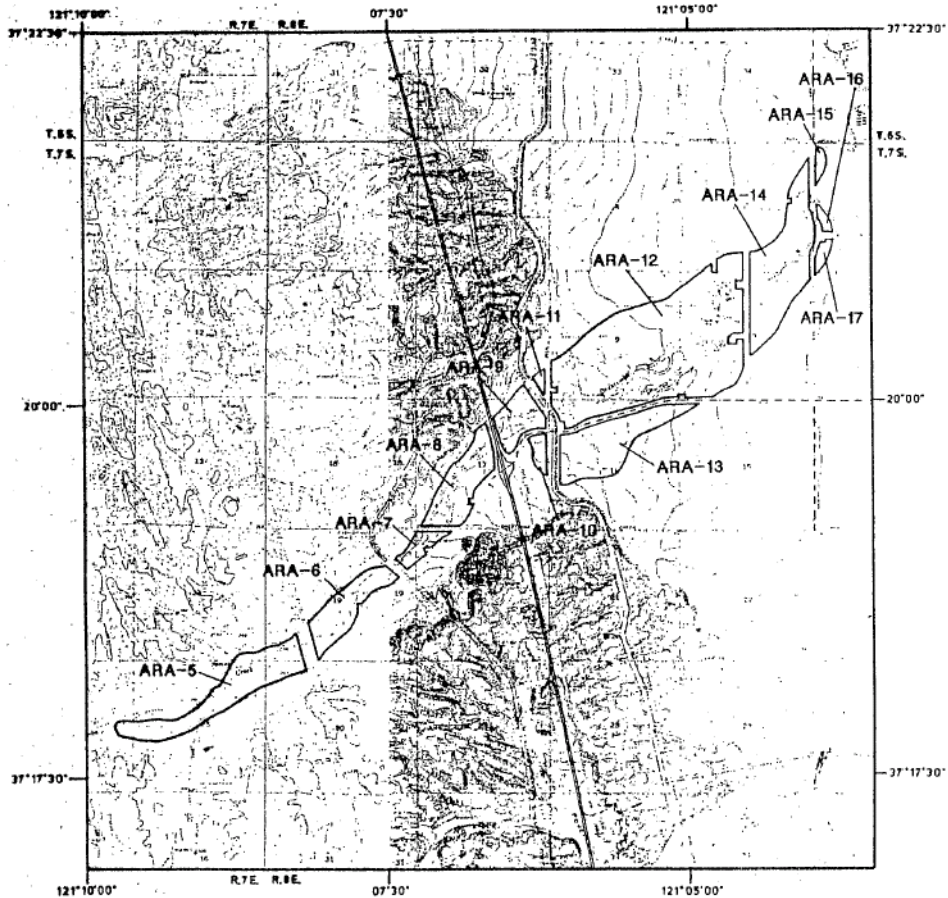
A-HOSPITAL CREEK FAN ARA's



***THIS PAGE INTENTIONALLY LEFT BLANK***

# AGGREGATE RESOURCE AREAS OF STANISLAUS COUNTY

State Division of Mines & Geology  
Special Report 173 (1993)



B-ORESTIMBA CREEK FAN ARA's

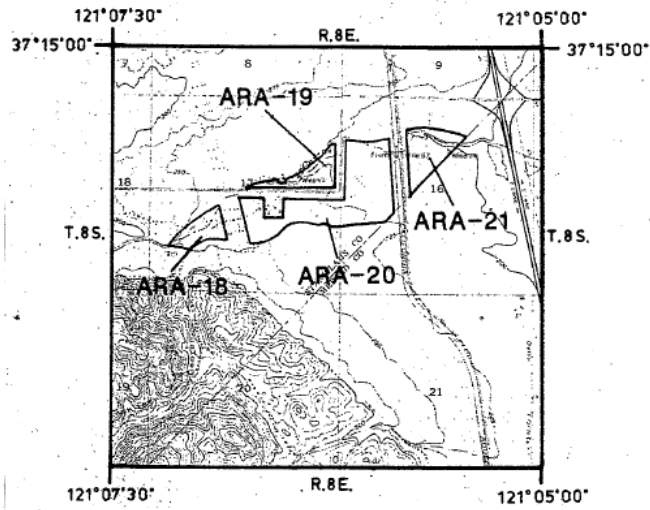


***THIS PAGE INTENTIONALLY LEFT BLANK***



**AGGREGATE RESOURCE AREAS  
OF STANISLAUS COUNTY**

State Division of Mines & Geology  
Special Report 173 (1993)



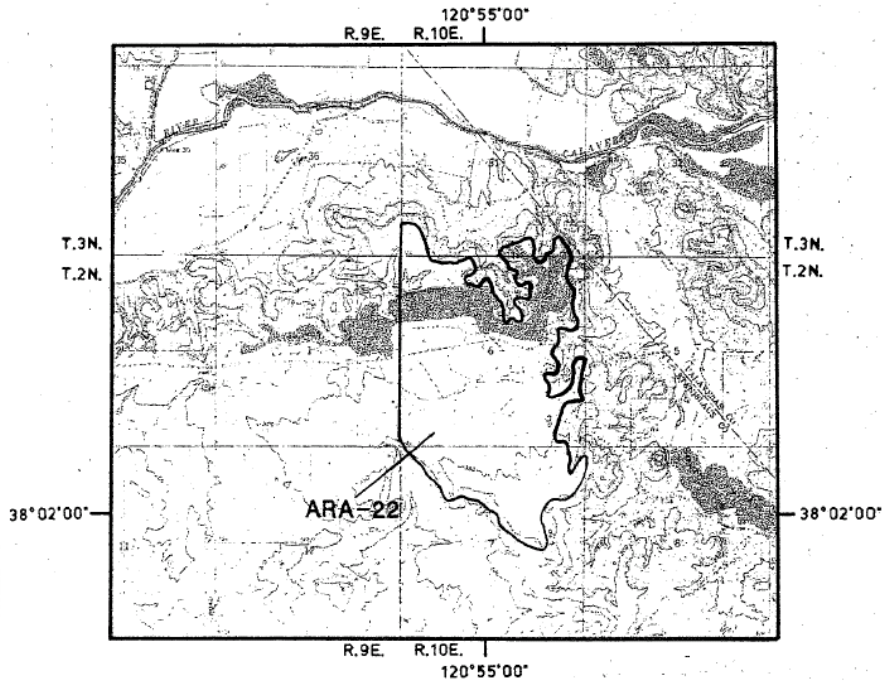
C-GARZAS CREEK FAN ARA'S



***THIS PAGE INTENTIONALLY LEFT BLANK***

**AGGREGATE RESOURCE AREAS  
OF STANISLAUS COUNTY**

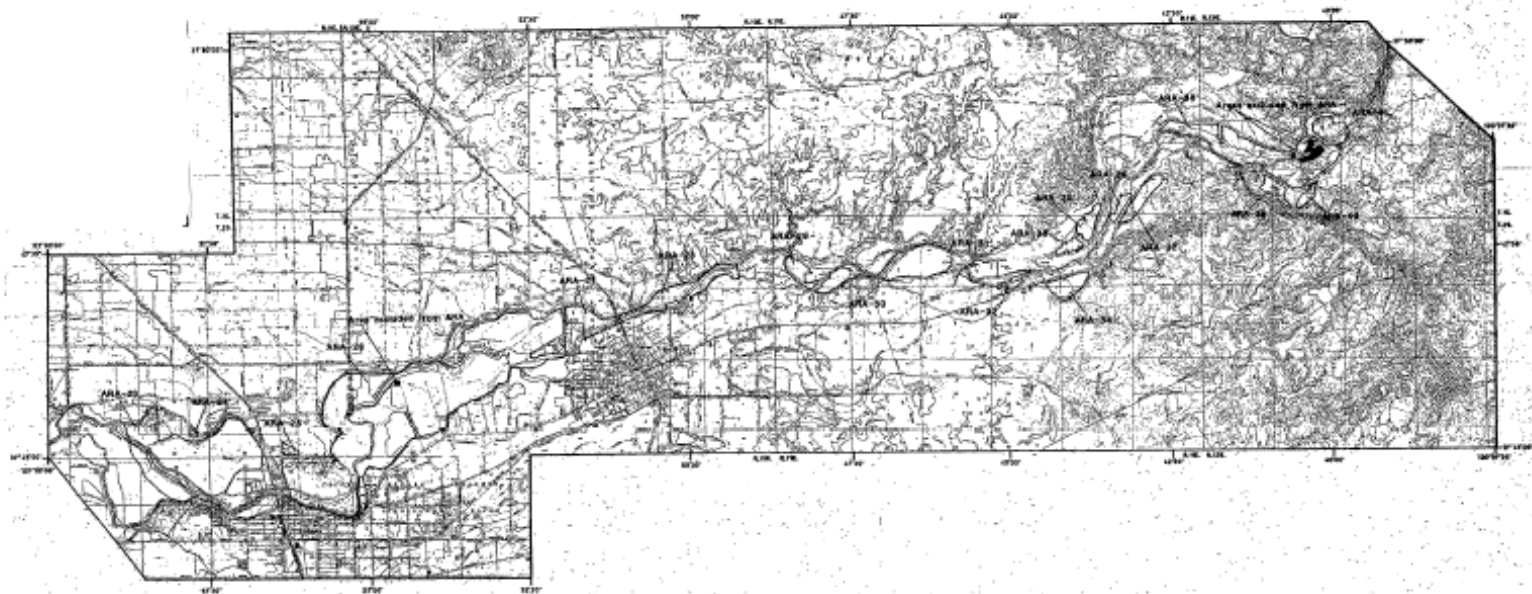
State Division of Mines & Geology  
Special Report 173 (1993)



D-CALAVERAS RIVER TERRACE ARA



***THIS PAGE INTENTIONALLY LEFT BLANK***

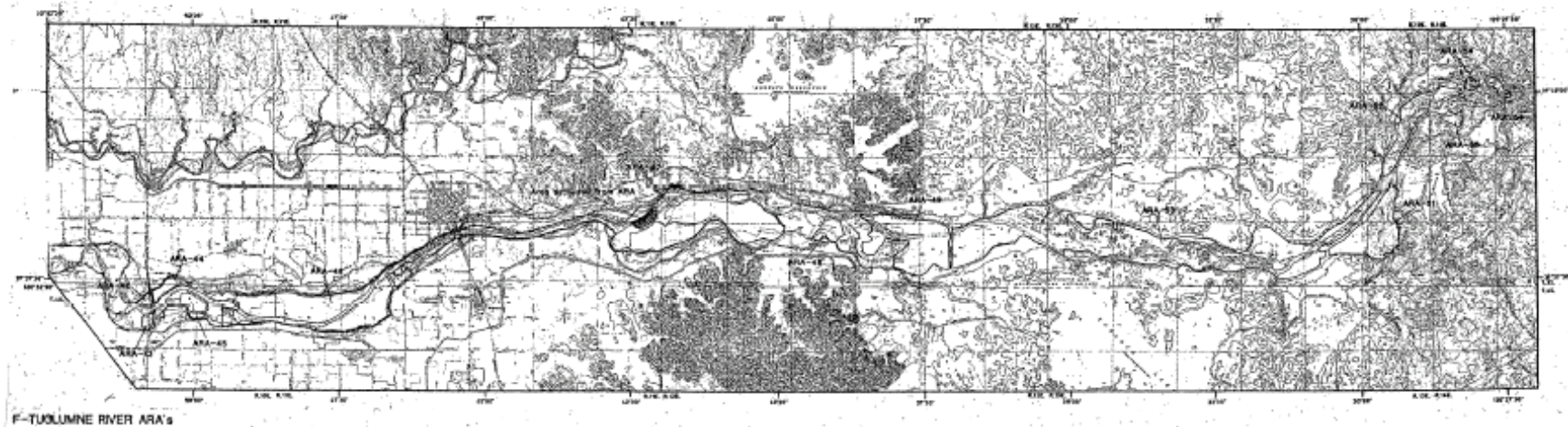


E-STANISLAUS RIVER ARA's



**AGGREGATE RESOURCE AREAS  
OF STANISLAUS COUNTY**  
State Division of Mines & Geology  
Special Report 173 (1993)

***THIS PAGE INTENTIONALLY LEFT BLANK***



**AGGREGATE RESOURCE AREAS  
OF STANISLAUS COUNTY**  
State Division of Mines & Geology  
Special Report 173 (1993)