



PUBLIC WORKS 2010 ANNUAL REPORT





Department of
Public Works
STANISLAUS COUNTY

Our Mission:

Manage and improve infrastructure through safe and efficient use of resources and assets for the benefit of our citizens.

Our Vision:

Strive to be the leading Public Works Department through innovative stewardship of infrastructure and environment.



Board Priorities

Board Priorities serve as the foundation for operational and strategic planning for the organization. The primary Board priorities supported by Public Works are a Well-Planned Infrastructure System, Effective Partnerships, and Efficient Delivery of Public Services.

A well-planned infrastructure system is essential to the quality of life for the residents of Stanislaus County. Improved transportation circulation is a key element in achieving this priority. The major achievements in this area have been:

- Resurfaced approximately 195 miles of existing roadway. Stanislaus County maintains nearly 1,600 miles of roadway. The ultimate goal is to resurface every street in the county once every ten years.
- Restriped 30% of County roadways.
- Completed the seismic retrofit of Grayson Road Bridge
- Leveraged \$12.5 million for road construction projects

The creation of the North County Corridor Transportation Expressway Joint Powers Authority is an excellent example of agencies partnering together to achieve a common goal. The Authority was formed in April 2008 to prepare, identify, and adopt a precise alignment, and prepare and certify environmental documents for a potential transportation expressway corridor east from State Route 99 to a tie-in with State Route 108/120 east of Oakdale. The Joint Powers Authority includes representatives from Stanislaus County and the cities of Modesto, Oakdale, and Riverbank.

The Final Environmental Impact Report (FEIR) has been completed, identifying a preferred study corridor. This enabled the California Transportation Commission (CTC) to approve State Route Adoption for the portion east of McHenry Avenue. With this action the North County Corridor, east of McHenry, will be signed as SR 108.

Letter from the Director



Matt Machado, PE
Director

It has been a year of change. With ever shrinking budgets and staffing and the State economy with respective budget in continuous flux and disarray, maintaining our core focus has been a challenge. Public Works continues to strive to focus on our core mission and to improve our efficiencies. A key milestone that we achieved this year was the consolidation of over 90% of staff to our Morgan Facility. This has improved efficiencies in communication, file storage and sharing, and all having a more common vision. Additionally, the feeling of being a more unified unit has raised morale considerably.

Other milestones reached in 2010 were in the area of roadway resurfacing and our bridge program. Approximately 195 miles were resurfaced, including many of the Urbanized Unincorporated County areas. Of the approximately 240 bridges in Stanislaus County there are approximately 20 in need of repair or replacement. In 2010 our Engineering Division was successful in programming approximately 10 of these bridges for design. This improvement of infrastructure is a benefit to all citizens and continues to be our mission as Stanislaus County Public Works.

As we move forward into 2011 we will continue to develop and implement efficiencies toward our core function. An important area of success in 2010 was our ability to partner with other County Departments and other agencies within our region. I look forward to continued success in the area of these partnerships.

We maintain that our future will be bigger, better, brighter and more significant.

Best to all,

Matt Machado

Letter from the Deputy Director



Laurie Barton, PE
Deputy Director, Engineering/Operations

A year ago at this time, Public Works was consolidating, for the most part, to the Morgan Road Facility. Big changes have brought about big successes. The communication and collaboration has been exciting and productive.

Our Roads people are in a new and better space that affords them more room and more opportunities for the exchange of ideas and information. They have been successful in providing 50 miles of new chip seal on our non-federal aid routes and they completed 650 miles of pavement striping. Several pipe repairs and replacements took place along with bridge maintenance and repairs. Streetlights are constantly being replaced and storm systems cleaned and maintained. The men and women of the Roads Division are a true testament to public service.

The Construction Division has once again delivered a long list of projects totaling more than \$15,000,000 in construction costs. Among those projects were the American Recovery and Reinvestment Act (ARRA) projects totaling about \$7,000,000 that resurfaced approximately 78 miles of roadway and installed two new traffic signals. The before and after pictures inside the report tell the real story!

The Engineering Division has delivered the plans and managed the programs to keep Public Works moving. From providing traffic data and analysis, applying for federal grant funding, reviewing development plans, working with other county departments to managing consultant contracts, the Engineering Division has been successful in meeting their goals and delivering quality transportation projects.

Morgan Shop keeps our equipment running and our crews working. They have been instrumental in developing a maintenance and repair plan for 30 storm drain pump stations. Compliance with air quality regulations has been a major concern for the Shop. To aid in that compliance and to supplement our fleet, the Shop has purchased several clean diesel off-road vehicles, including a storm drain cleaner, road broom, roller, bobcat, and a towable air compressor.

I look forward to the coming year and the new and exciting things that Public Works will accomplish. Some of the highlights will be the beginning plans to replace the Seventh Street Bridge, improvements to Las Palmas Avenue at Sycamore and Elm streets, the Claribel Road at BNSF railroad crossing and continued maintenance of our 1600 mile roadway system. We will continue work on the North County Corridor, the South County Corridor, Claribel Widening, Hammett and Kiernan Road Interchanges.

I truly appreciate the hard work and dedication that Public Works presents as we try to accomplish our mission to manage and improve infrastructure through safe and efficient use of resources and assets for the benefit of our citizens. We really do strive to achieve our vision to be the leading Public Works Department through innovative stewardship of infrastructure and environment.

Laurie Barton

2010/2011 Budget Overview

Public Works is committed to providing the best possible service within budget constraints. Given the nature of the services provided, available funding, and the length of time required to take a project from inception to completion, it is critical that the Department look beyond the normal one-year budget timeframe.

Highway Users Tax (HUTA) has historically provided a relatively stable, if somewhat limited source of funding. The majority of road operating funds in previous years came from excise (per gallon) tax on motor fuel-HUTA and Proposition 42 funds derived from the sales tax on motor fuel. This year sees a change in that formula. In March of 2010 the State significantly changed how transportation projects are funded. The sales tax on gasoline (Prop 42) was replaced with a 17.3 cent increase to the excise tax. This revenue will be used to backfill for the loss of Prop 42 funding. Although the revenue sources have changed, the Department anticipates that actual revenues will be in-line with the prior year. With the switch from sales tax to excise tax, protections connected to Proposition 42 funds are eliminated. What this means: The State could “borrow” the funds for up to a three year period, continually, without having to pay interest. This would severely impact the Department’s ability to function.

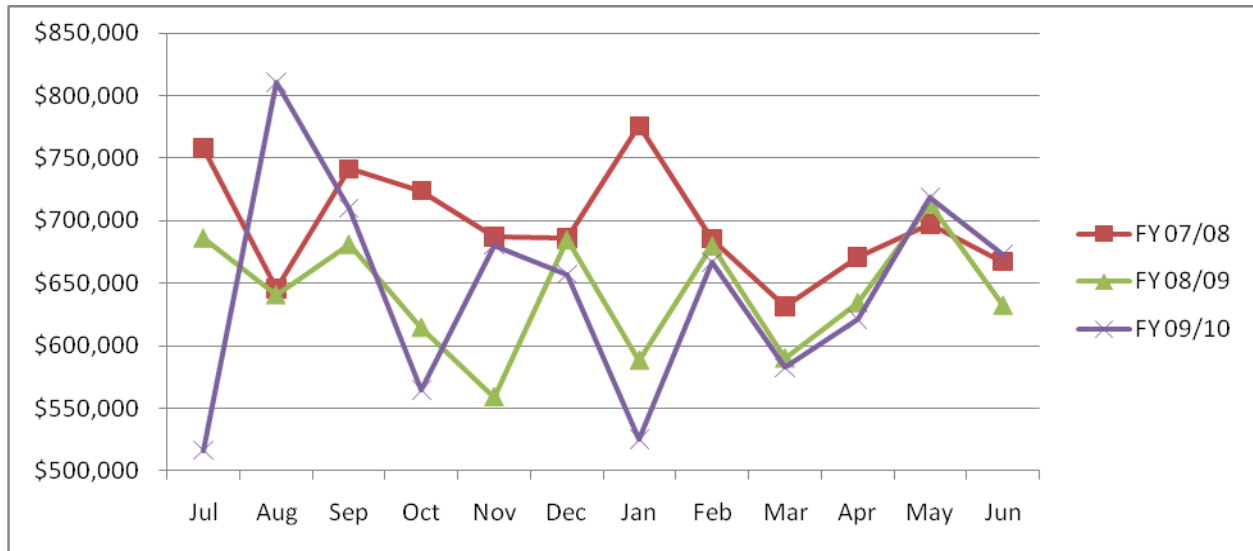
Due to the State’s inability to pass a timely, balanced budget, a portion of local road fund revenues were deferred and not received until April 2011. The State authorized deferral of roughly 50% of the “old” HUTA revenues each month. For Stanislaus County, that amounted to approximately \$350,000 per month. Subsequently receipt of the partial revenues were entirely postponed from August through October 2010 until the passage of a State budget was completed. When funding is postponed, the State is not required to pay interest on late funds.

Historically HUTA and Proposition 42 funds have provided nearly 99% of Road Operations funding. HUTA revenues in fiscal year 2009/2010 were just slightly higher than the previous year; however they are still tracking roughly 10% below prior years. Revenues received were at the fiscal year 2000/2001 levels. Unfortunately, it does not appear that revenues will recover from this reversal in the near future.

Revenue decreases have been offset somewhat by the receipt of Proposition 1B bond funds. These bonds were authorized by voters in November of 2006 and are allocated by the State annually. It was originally anticipated that the use of Prop 1B funds would span a 5-year period. Fiscal year 2010/2011 was to be year four of the five. Due to the State’s decision to defer HUTA and Prop 42 funding in fiscal year 2009/2010, all the remaining Prop 1B funds were allocated in 2009/2010. Stanislaus County’s allotment was approximately \$7.5 million. In addition, the deadline for use of the funds was extended through 2012/2013. The Department plans to utilize approximately \$2.5 million annually of these Prop 1B funds through fiscal year 2012/2013.

The Department is anticipating challenges in fiscal year 2013/2014. Prop 1B funds will be depleted resulting in a \$2.5 million reduction in revenues. To prepare for these challenges, a 4-year budget plan has been developed anticipating a 15% reduction from the 2009/2010 operating budget. This reduction will affect not only Public Works Road Operations, but Administration, Engineering, and Morgan Shop. The majority of the funding for each of these divisions is road funds.

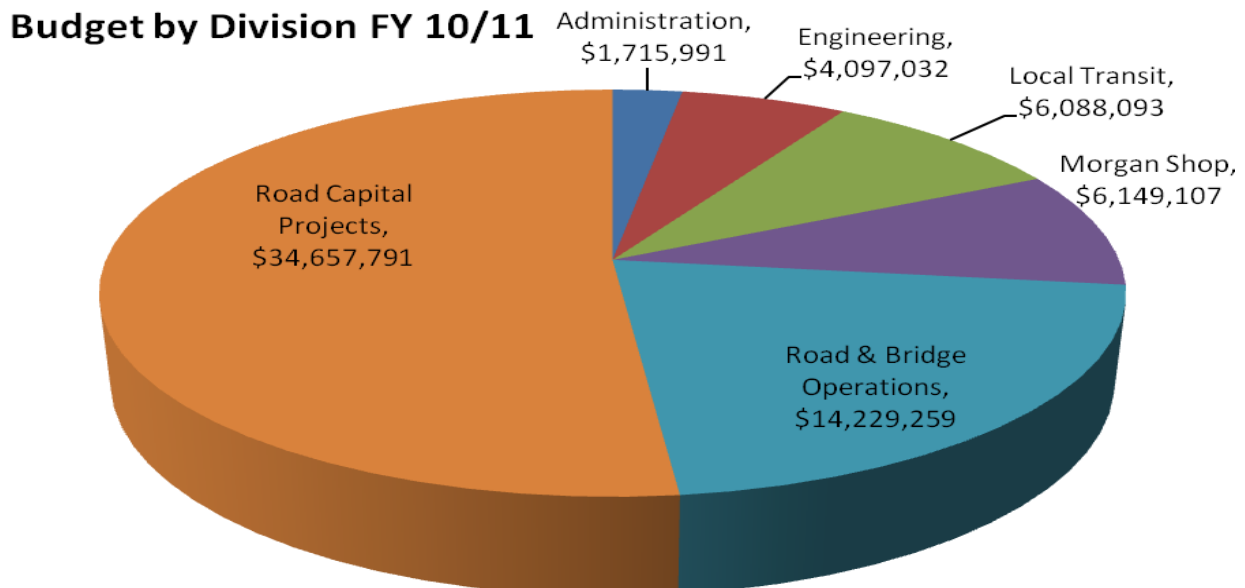
Highway Users Tax-Three Year Comparison



Public Works' annual budget for Fiscal Year 2010/2011 is approximately \$67 million. As evidenced in the graph below, the Road Operations and Maintenance and Road Capital Project budgets comprise nearly 75% of the total. Capital projects consist of roadway improvements such as intersection and roadway widening, traffic signals, and road resurfacing.

Public Works' Transit division oversees the operation of Stanislaus Regional Transit (StaRT), the County's intercity public transportation system. StaRT provides intercity service within the County and links with city transportation systems to provide coordinated transit service to 16 communities.

The remaining Public Works' divisions of Engineering, Morgan Shop, and Administration provide support services. Engineering provides design, construction, traffic, survey, and development support. Morgan Shop provides heavy equipment and fueling services. Their budget includes nearly \$3 million of Congestion Mitigation and Air Quality grants for the purchase of clean air heavy duty vehicles. Administration provides financial and administrative support to the Department, and Geographic Information Systems (GIS) services to the entire County.



Public Works Staffing

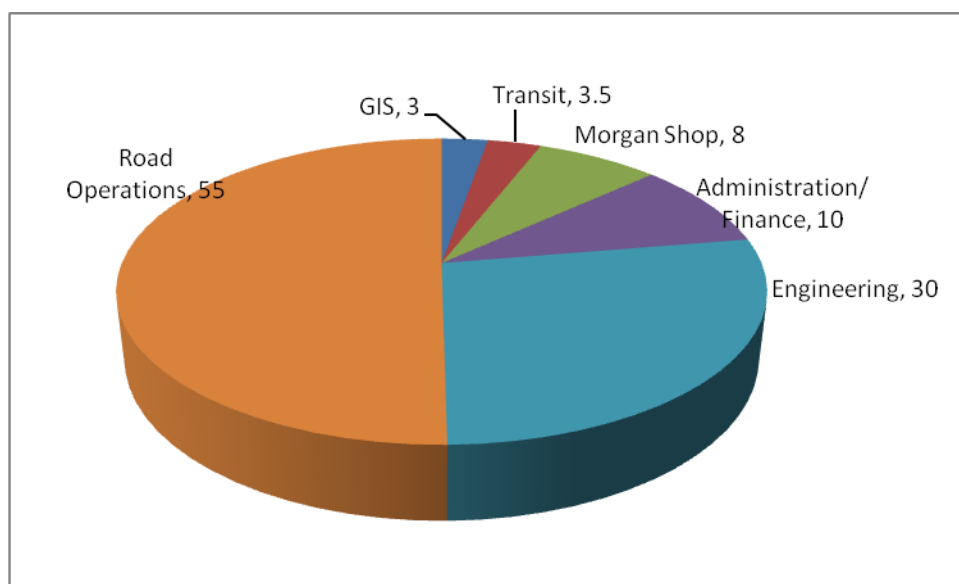
Public Works is comprised of six functional areas. These areas support Public Works' mission to manage and improve infrastructure through safe and efficient use of resources and assets for the benefit of our citizens.

The Department's Facility Master Plan was developed and accepted by the Board of Supervisors in the spring of 2010. DSA, Inc. was selected through a request for proposal (RFP) to evaluate existing facilities and develop a forecast of future needs based on service demand and projected staffing, equipment, and inventory levels. The master plan is based on a 20-year build out. The proposed plan fully utilizes the existing site at 1716 Morgan Road, bringing all of Public Works under one location.

In a first step towards implementing the Facility Master Plan, Public Works moved most of the staff from the Tenth Street Place facility to the Morgan Road Facility. This consolidation was accomplished by relocating existing modular units from the Oakdale and Patterson Corporation Yards, and purchasing an additional unit. Having the majority of staff at one location has increased efficiency and promoted team spirit.

Public Works staff are housed at two locations. The majority of the department, Road Operations, Design and Construction Engineering, and Morgan Shop, Administration, and GIS are located at 1716 Morgan Road. The Transit Division and a small development component of Engineering are located at Tenth Street Place.

Public Works has experienced a 10% reduction in staffing from Fiscal Year 2009-2010. The current economic situation combined with future projected revenue has resulted in the Department downsizing by 22 employees. These positions were spread across the Department.



Public & Private Regional Partnerships with Stanislaus County Public Works

Administration Division

Partner

General Services Agency (GSA)

Partnering Service

Cost Accounting Management System (CAMS)



Engineering & Survey Divisions

National Geodetic Survey (NGS), California Land Surveyors Association (CLSA), City of Modesto, and KSN Survey

Survey Calibration Course

Modesto Irrigation District (MID)

Woodward Reservoir Access

City of Modesto

Seventh Street Bridge Replacement

San Joaquin County

McHenry Avenue Bridge Replacement

City of Modesto

Jennings Road Annexation

Merced County, Merced COG, City of Turlock, and Stanislaus COG

SR-165 Realignment

Cities of Modesto, Riverbank, and Oakdale, Stanislaus COG, and Caltrans

North County Corridor Project Approval and Environmental Documentation

City of Modesto and Stanislaus COG

SR-132 West Expressway

Stanislaus COG, Caltrans, and M&ET

SR-132 Infill Project

Geographical Information System (GIS) Division

Cities of Newman, Oakdale, and Riverbank

GIS Users Group, data sharing, and provide GIS training and access

Cities of Ceres, Modesto, Oakdale, and Waterford

Aerials

Public & Private Regional Partnerships (Continued)

Morgan Road Shop Division

<u>Partner</u>	<u>Partnering Service</u>
Health Services Agency (HSA)	Repairs and fuels Maternity Outreach Mobile (MOM)
General Services Agency (GSA)	Repairs stand-by generators
City of Newman	Repairs alternative fueled vehicles
Department of Environmental Resources (DER)	Rents Morgan Shop's heavy equipment
Parks & Recreation Department	Partnering with aerial equipment
Cities of Ceres, Newman, Modesto, and Riverbank, and all County Departments	Supplies compressed natural gas (CNG), gasoline and diesel fuels

Transit Division

<u>Partner</u>	<u>Partnering Service</u>
Cities of Newman, Patterson & Waterford	Dial-a-Ride services
Various social service agencies: Community Services Agency (CSA), Health Services Agency (HSA), Alliance Worknet (through StanWorks Advisory Committee)	Ride/ticket coordination
Caltrans	Park & Ride – Salida
Stanislaus COG, social service agencies, and transit operators	Social Service Transportation Advisory Council (SSTAC), Mobility Advisory Council, and Transit Operator Committee



Road Operations Division

Partner

Partnering Service

City of Ceres Irrigation District (CCID),
Modesto Irrigation District (MID),
Turlock Irrigation District (TID),
Oakdale Irrigation District (OID), and
Patterson Irrigation District (PID)

Roadway Crossings

Stanislaus County Parks Department

Fabricated a new bridge deck and railing at
Frank Raines Off Road Vehicle Park

Stanislaus County Sheriff's Office
Alternative Work Program (AWP)

Participants pick up roadside debris, weed
abatement, & miscellaneous duties for Road
Division

Hickman, Keyes, Salida, Denair, Waterford,
and Residents of Diablo Grande

Provided Adopt-A-Road assistance

Knights Ferry Cemetery

Contracted to perform annual weed abatement
and tree trimming maintenance

Various event organizers

Event organizers may enter into an agreement
with Public works to provide materials, equipment
and/or labor for special events.

Property owners

Work with property owners in reducing the cost of
replacing private culverts that are under the road
or on County right-of-way by entering into a co-op
agreement.

Modesto Irrigation District, Turlock
Irrigation District, Central California Irriga-
tion District and Patterson Irrigation District

Co-op to replace culvert pipes that go under
the road or obstructions in the right-of-way

Water District #8

Co-op to replace culvert pipes that go under the
road or obstructions in the right-of-way. Also fa-
bricated and installed a safety grate to the Salado
Creek pipe inlet.

City of Turlock

Co-op to install no parking signs around the
Turlock Flea Market for enforcement issues.

City of Turlock

Co-op on paving projects.

City of Modesto

Co-op on paving projects and shoulder work.

Cities of Modesto & Riverbank, & Caltrans

Co-op to install the Kirk Lindsey Memorial
Highway signs on SR-108.

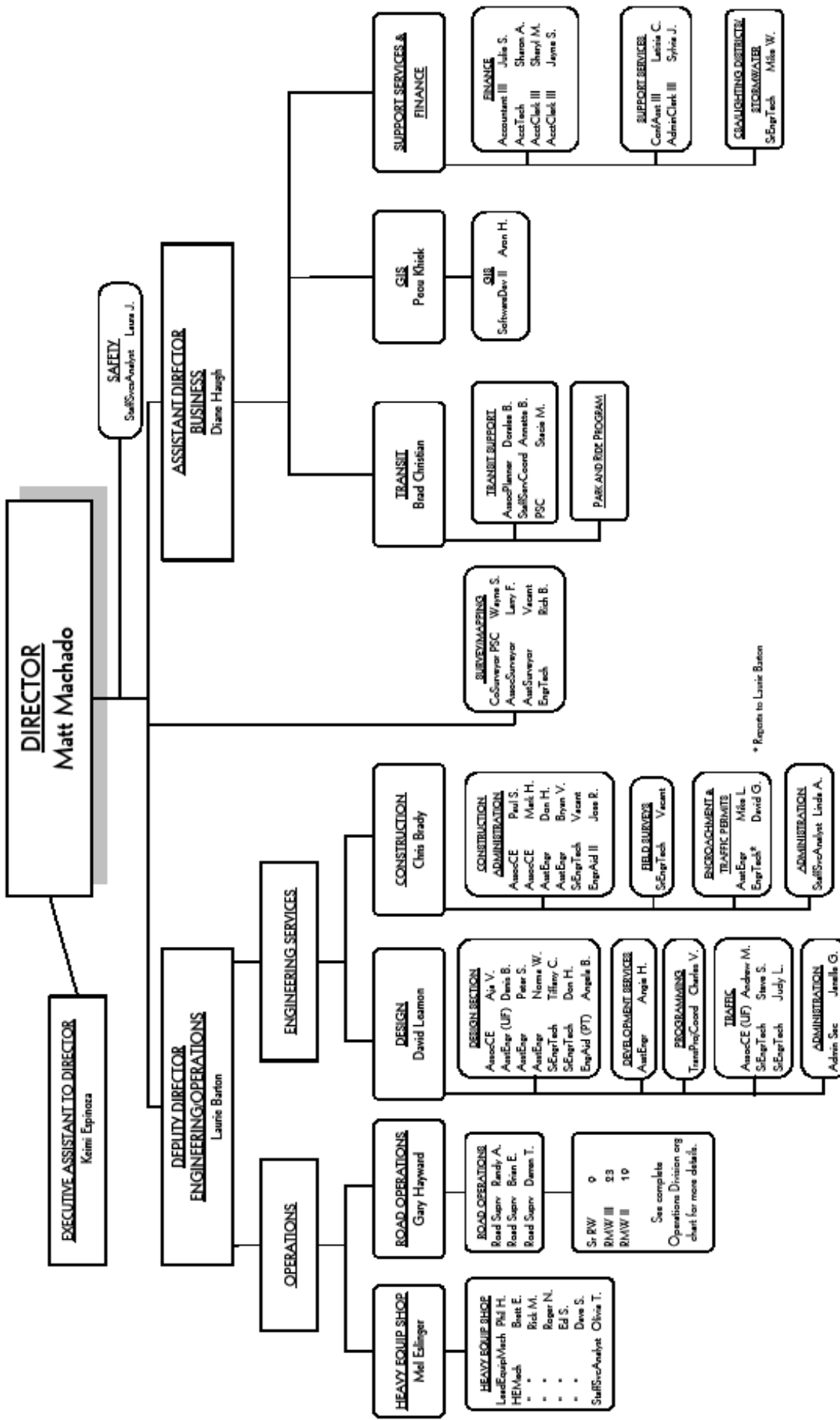
Fink Road Landfill
County Service Areas

Mow, weed spray, and street sweep
Public Works is reimbursed for maintenance we
perform.

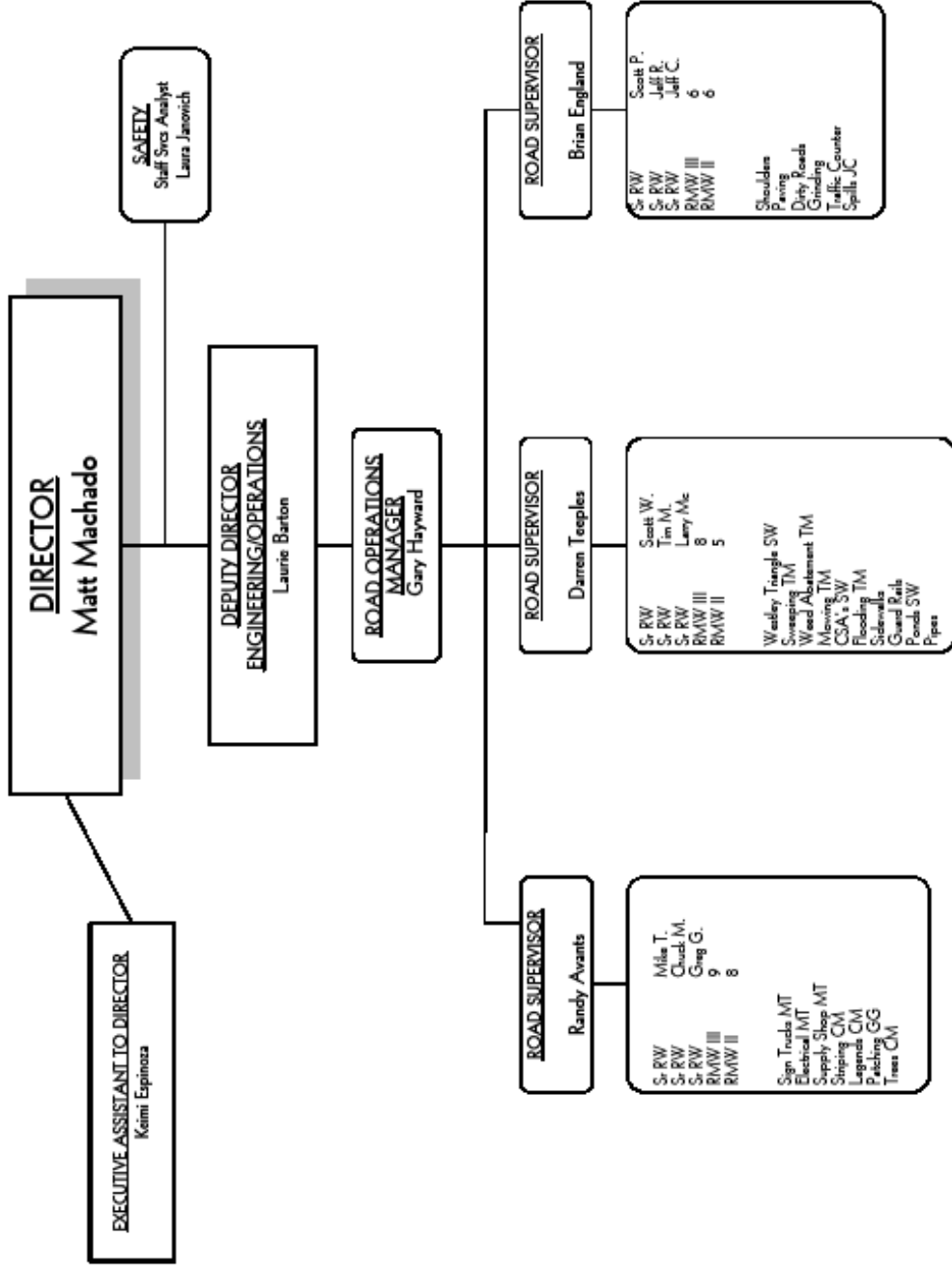
County Service Area Lighting Districts

Public Works is reimbursed for maintenance we
perform.

DEPARTMENT OF PUBLIC WORKS



DEPARTMENT OF PUBLIC WORKS OPERATIONS



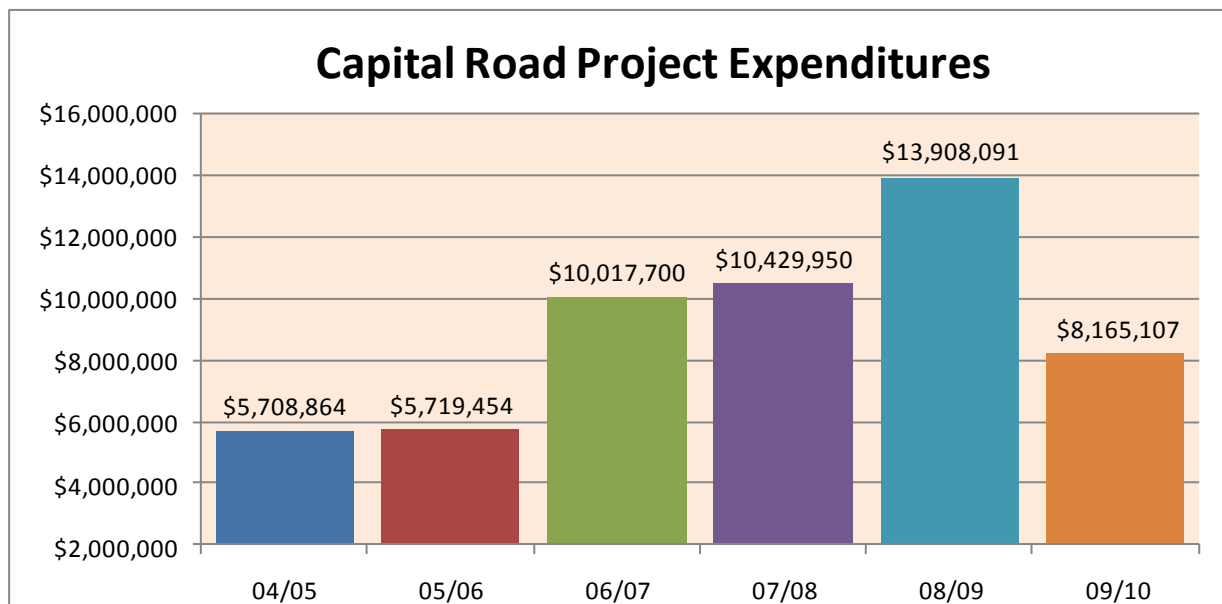
Project Funding

The major sources of funding for major road projects are Public Facility Fees, State and Federal Grant funds, Proposition 1B, and American Recovery and Reinvestment Act (ARRA-stimulus).

Stanislaus County implemented a Public Facility Fee program in 1990. This program identified routes within the County that would be impacted by growth, and established a fee structure to capture the cost of that growth. Since the inception of the program, Public Facility Fees have provided funding for over \$52 million in road projects. Improvements include road and intersection widening, and addition of traffic signals.

Proposition 1B provides additional resources for road operations, maintenance, and major road projects. The availability of Prop 1B funding has enabled Public Works to escalate the amount of major road projects. These funds can be used to leverage federal and state money. Federal and state grants usually require a “local match” of between 10% and 20%.

American Recovery and Reinvestment Act (ARRA) projects were undertaken this year. Stanislaus County will be receiving just over \$7,000,000 of these stimulus funds. The funds are being used to resurface approximately 78 miles of roadways throughout the County. ARRA funds are also being used for two traffic signal installations on Carpenter Road; one at Beverly Road and the other at Robertson Road. These projects were started in Fiscal Year 2009/2010 and were completed in early 2011.



Engineering Services Division

Design Section



Dave Leamon, PE
Senior Civil Engineer

The Design Section provides oversight and design services for road and bridge improvement projects as defined in the Capital Improvement Program. The services include developing design plans that incorporate the County's standard specifications and meet state and federal funding requirements. The Design Section addresses the environmental, utility and right of way coordination of a project through to construction documents that consist of plans, specifications and an engineer's estimate. The construction documents are presented to the Board of Supervisors for approval to bid; the project is awarded and then tracked for progress through construction.

This Section also provides project consultant selection, and design and construction oversight services to other County Departments such as Environmental Resources, Parks and the Redevelopment Agency.



Engineering Services Division

Design Section (Continued)

AUTHORIZED FEDERAL FUNDING

In 2010, the amount of federal funding increased from previous years. The majority of the funding secured has been associated with our aggressive rehabilitation or replacement bridge program. Additionally we continued our previous success with our road resurfacing, safety improvements, replacement of heavy equipment and our Regional Inter-City Road Improvement Program. The authorized funds secured for the Federal Fiscal 2010/2011 amounted to approximately \$12.5 million which include the following:

Congestion Mitigation Air Quality (CMAQ) funds:

Heavy Equipment Replacement Program: 100% federal funds in the amount of \$2,895,000. This year we were able to take advantage of the 100% federal funding and save over \$500,000 of local match, to replace our older diesel fuel heavy equipment with newer 2010 State compliant with ARB fuel and pollutant reduction diesel fuel heavy equipment consisting of 18 pieces of heavy equipment used for: sign trucks; water trucks; loaders, transfer truck; road graders; road brooms, backhoes, street sweepers; roll-off truck; forklift; and super dump trucks.

Intersection Improvements: Received 100% Federal funding amounting to \$1,550,000 and saved over \$150,000 of local match to start the design efforts for safety improvements and pollution reduction at the following intersections:

- Crows Landing Road at West Main Street Intersection: Install traffic signals, left turn lane and drainage facilities. \$350,000
- Claribel Road at Roselle Avenue Intersection: Install traffic signals, left and right turn lanes and drainage facilities. \$300,000
- Claribel Road at Coffee Road intersection: Install traffic signals, left and right turn lanes and drainage facilities. \$350,000
- Hatch Road at Carpenter Road Intersection: Install traffic signals, left and right turn lanes and drainage facilities. \$200,000
- Golden State/Golf Road/Berkeley Avenue intersection improvements; construct roundabout and drainage facilities. \$350,000



BRIDGE PROGRAMS

Bridge Scour Plan of Action (POA)

Received \$87,000 of federal funds to develop a work plan to identify the deficiencies, determine a short term and long term monitoring and scour mitigation plan, and define the available detour routes. Twelve bridges were identified for this initial POA.

Off System (County bridges) Preliminary Engineering

Programmed funds for preliminary engineering efforts for twelve (12) existing bridges throughout the County in the amount of \$2.9 million.

Highway Bridge Program Over the Tuolumne River

Project Name	Project Type	Cost
Geer Road	Seismic retrofit	\$204,505
Hickman Road	Replacement	1.7 million
Santa Fe Avenue	Seismic retrofit	\$725,946
Seventh Street	Replacement	\$2.5 million

Bridge Project Related:

- Crows Landing Bridge, 30% plans complete, project on schedule for environmental clearance Winter 2011-2012
- McHenry Avenue Bridge over the Stanislaus River, Environmental Phase approximately 50% complete, 30% design, environmental complete Spring/Summer 2012
- Grayson Road Bridge over Laird Slough, Seismic retrofit completed 2010
- Request for Qualifications sent out, short listed 25 firms as qualified bridge consultants
- Caltrans made available Toll Credits for Local Road Bridges, Public Works applied for 10 local priority bridges from our Program of Projects – Bridges
- Received Federal Highway Bridge Funds for the following projects:
 - Kilburn Road Bridge over Orestimba Creek, fracture critical bridge replacement, first new bridge project in over 10 years
 - Peter Miller Road Bridge over the Delta-Mendota Canal, continuation of existing seismic retrofit
 - Geer Road Bridge over the Tuolumne River, continuation of existing Seismic Retrofit project – plans 90% complete, environmental process 30% complete, environmental document should be complete Winter 2011-2012
 - River Road Bridge (Hills Ferry) over the San Joaquin River continuation of existing seismic retrofit project
 - Pete Miller Road Bridge over the Delta-Mendota Canal, continuation of existing seismic retrofit project
 - Seventh Street Bridge over the Tuolumne River – Memorandum of Understanding (MOU) being processed with the City of Modesto, Request For Proposals in Spring 2011

Engineering Services Division

Design Section (Continued)

Road Project Related:

- RSTP Program C and D received environmental clearance for asphalt concrete overlay to be constructed in 2010-2011 and 2011-2012
- RSTP Program C internal plans and specifications completed internally bidding Spring 2011 for Summer 2011 construction
- J-59 Cape Seal 2.5 miles of Rubberized Cape Seal – working with Caltrans to replace these funds to construct Fall 2011
- Partnership project with StanCOG, Engineering internally designed and got approved through Caltrans two intersections at Beard and McClure along State Route 132 East in three months
- Worked with California Public Utilities Commission to approve and fund a traffic signal at Terminal and Claribel
- Sycamore/Elm and Las Palmas signals: Utility coordination proceeding with PG&E
- Design Reports completed for Claribel Road Widening from McHenry Avenue to Oakdale Road
- Hatch Road Channelization Project finished as internal design, project bidding in 2011
- BNSF Railroad Various Crossings in and around the community of Denair project design completed, going to bid Spring 2011

Process:

- Resource Based scheduling for Design complete
- Capital Improvement Program retooled for Public Works implementing our Program of Projects

Special Projects:

- **Empire Infrastructure Improvement Next Phase** - The Planning Department and Public Works will start the preliminary planning for the next construction phase within the community of Empire. This is a two year effort and the limits of the improvements are dictated by the amount of funding secured by the County
- **Airport District Sewer** – Preliminary planning and estimating to be complete 2011
- **Parklawn Sewer** – Conceptual plans being reviewed by the City of Modesto, estimates complete, design may begin 2011, depending on RDA funding
- **Frank Raines Park Improvements** – The water filtration and distribution system master plan and Phase 1A design has been completed by PSOMAS Consulting Engineering. The project is being publicly bid Winter 2011 and construction to begin Summer 2011. An ongoing project and fencing of the entire park, this will be accomplished in phases, as funding permits
- **Improvement to Heron Pointe, Woodward Reservoir**- Project was completed as an internal design on time and under budget. The project was awarded to Ross F. Carrol of Oakdale, CA for construction and was completed in Spring of 2011
- **Salida Wells Project** – Design is providing design review and bidding support to Parks and Recreation on four irrigation wells for Segesta, Murphy and Win-canton Park

TRAFFIC ENGINEERING SECTION

The Traffic Engineering Section works to maintain the capacity and safety of County roads. Division duties include capacity analysis and alternative selection for major roadway widening and intersection improvements; review of construction plans to ensure proper traffic control, maintenance of traffic, detour routing; preparation of traffic studies to determine reduced and increased speed zones, all-way stops, and traffic signal locations. The Traffic Division also evaluates new zoning and subdivisions that access County roadways to determine if there will be impacts to roadway safety and efficiency.

The Traffic Engineering Division provides the following services:

- Identifies and analyzes traffic capacity and safety for capital improvement projects
- Traffic data collection
- Performs traffic studies:
 - Traffic signal installation
 - Speed zone studies
 - Multi-way stop
 - Traffic Impact
- Traffic Signals
 - Design and modification
 - Traffic light timings
- Provides direction to the Road Operations Division for sign and striping maintenance
- Reviews all public and private developments for compliance with County standards and the general plan to insure there are no significant impacts to current and planned infrastructure
- Prepares ordinances and resolutions for locally enforced traffic related laws
- Updates annual state and federally funded programs:
 - Annual maintained mileage report to the Federal Highway Administration (FHWA)
 - High performance monitoring system
 - Federal aid for at-grade High Rail Crossing Program



Engineering Services Division

Design Section (Continued)

TRANSPORTATION PERMITS

The Transportation Permit function at Public Works Department is charged with the responsibility of issuing oversize transportation permits to public agencies, private companies, and transportation permit services. Oversize transportation permits are issued for truck loads that are either oversize in dimension or oversize in load weight. The permits are issued for movement over County roadways. Daily transportation permits are issued for a period of five working days over a route specified on the permit and annual blanket transportation permits are issued for one year over all County roadways with the exception of those specified in the Stanislaus County transportation bridge map addendum which specifies weight limits on County road structures.

The purpose of the permits is to protect County road structures from damage by oversize or overweight truck moves as well as restricting oversize truck movement on certain County roadways in the interest of public safety.

2010 Accomplishments	2011 Forecasted Projects
<ul style="list-style-type: none">• Issued 277 Annual Transportation permits• Issued 605 Daily Transportation Permits• Updated County Transportation Permit form for use at online website• Developed transportation permit instructions for posting at online website• Developed transportation permit brochure• Updated and improved County bridge map and legend based on current road data and requirements	<ul style="list-style-type: none">• To make available on the internet our transportation permit application and instructions• Post a Transportation Permit Brochure at the Stanislaus County Public Works online website• Update the Department Policy for Issuing Transportation Permits• Continue to provide prompt and courteous service to all of our customers



DEVELOPMENT SERVICES

The Land Development and Plan Review Section of the Engineering Division of Public Works protects the County's interest by ensuring that the development and design of the public improvements are in compliance with Stanislaus County Standards and all applicable laws to provide for the greatest benefits to the public.

The Land Development and Plan Review Section of the Engineering Division provides the following services:

- Customer assistance to the public
- Review commercial and industrial projects
- Review road classifications
- Write Conditions of Approval for discretionary permits
- Attend pre-design meetings
- Attend Planning Commission meetings, Environmental Committee meetings and General Plan Update Technical Committee (GPUTC) meetings
- Field services include data gathering, site review and verifying that right-of-way is sufficient for future road classification
- Verify that Subdivision Plans, Parcel Maps and Improvement Plans meet the Conditions of Approval adopted by the County Planning Commission
- Index records, such as Improvement Plans, Subdivision Improvement Plans, Financial Guarantees, and Street Improvement Agreements
- Review roadway improvement plans for encroachment permits



***Beckwith Court,
O'Brien Veterinary***



***Delany Aggregate Lake
Road***



G3, Whitmore Avenue

Engineering Services Division

Construction Section



Chris Brady, PE
Senior Civil Engineer

The Construction Division oversees all construction related elements of the Public Works Department projects. Through contract administration and construction inspection, it is the goal of the Resident Engineer to ensure that the project is built according to the plans, specifications, and on budget. In doing so, the Resident Engineer assures the public that projects are completed to meet the County's standards. The Resident Engineer also processes any changes to the project plans through the Board of Supervisors for approval.

The Construction Division also provides construction contract administration services to other Stanislaus County departments, such as Parks and Recreation, Environmental Resources, and the Planning/Redevelopment Agency.



2010 Accomplishments	2011 Forecasted Projects
<ul style="list-style-type: none"> • Grayson Road Bridge Retrofit • 2009 Slurry Seal • Carpenter Road Traffic Signals • Empire Infrastructure, Phase 1A • Ladd at McHenry Intersection Project • Mariposa Road Rail Road Crossing • ARRA 2009 Cape Seal • ARRA Hughson SOI Cape Seal • RSTP Cape Seal 	<ul style="list-style-type: none"> • Heron Point Boat Launch Facilities at Woodward Reservoir • 9th Street at Latimer Avenue Left Turn Pocket Improvements • Las Palmas Avenue Traffic Signals at Sycamore Avenue and Elm Avenue • Claribel Road at BNSF Railroad Crossing Improvements • Hatch Road at Crows Landing Traffic Signals • RSTP Overlay Program C • Hatch Road Channelization

Grayson Road Bridge Retrofit

Improvements: Seismic Retrofit
Cost: \$140,000
Start Date: August 2010
Completion Date: November 2010
Contractor: Cunningham & Sons, Inc.
Resident Engineer/Construction Inspector: Bryan Voyles



Engineering Services Division

Construction Section (Continued)

2009 Slurry Seal

Improvements: Slurry Seal and Pavement Delineation

Cost: \$740,000

Start Date: October 2010

Completion Date: November 2010

Contractor: California Pavement Management Company

Resident Engineer/Construction Inspector: Bryan Voyles, Jose Ramirez



Carpenter Road Traffic Signals

Improvements: Traffic Signals, Storm Drainage, Curb and Gutter, Asphalt Overlay, and Pavement Delineation

Cost: \$1,700,000

Start Date: July 2010

Completion Date: December 2010

Contractor: Granite Construction Company

Resident Engineer/Construction Inspector: Chris Brady, Nolte Associates, Inc.



Empire Infrastructure, Phase 1A

Improvements: Storm Drainage, Curb and Gutters, Asphalt Pavement, and Pavement Delineation

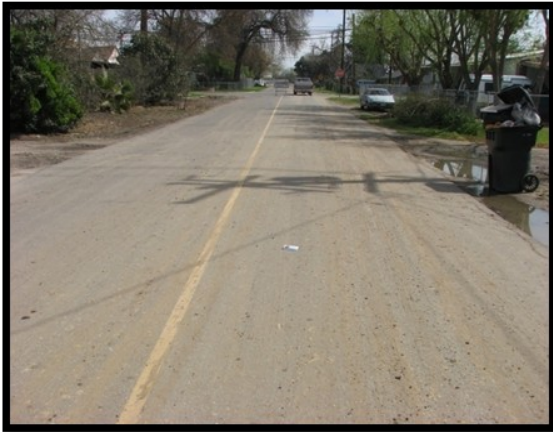
Cost: \$2,200,000

Start Date: January 2010

Completion Date: November 2010

Contractor: Granite Construction Company

Resident Engineer/Construction Inspector: Chris Brady, Bryan Voyles, Jose Ramirez, Nolte Associates, Inc.



Empire Improvement Project (Before & After)



Engineering Services Division

Construction Section (Continued)

Ladd Road at McHenry Avenue Intersection Project

Improvements: Traffic Signals, Intersection Widening, Storm Drainage, Asphalt Pavement, and Pavement Delineation

Cost: \$1,600,000

Start Date: March 2010

Completion Date: November 2010

Contractor: Granite Construction Company

Resident Engineer/Construction Inspector: Mark Hamblin



Ladd Road at McHenry Avenue Intersection Project (Before & After)



Mariposa Road Railroad Crossing

Improvements: Four New Railroad Control Arms, Concrete Medians, Widening of the Returns, Asphalt Overlay, and Pavement Delineation

Cost: \$56,400

Start Date: July 2010

Completion Date: October 2010

Contractor: George Reed, Inc.

Resident Engineer/Construction Inspector: Jose Ramirez



Mariposa RR Crossing (Before & After)

ARRA 2009 Cape Seal

Improvements: Cape Seal (Type II Slurry Seal over a 3/8 inch polymer modified chip seal), and Pavement Delineation

Cost: \$4,700,000

Start Date: August 2010

Completion Date: December 2010

Contractor: Bond Blacktop Inc.

Resident Engineer/Construction Inspector: Don Hamaguchi

Cape Seal Process



3/8 Chip Seal

Engineering Services Division

Construction Section (Continued)

ARRA Hughson SOI Cape Seal

Improvements: Cape Seal (Type II Slurry Seal over a 3/8 inch polymer modified chip seal), and Pavement Delineation

Cost: \$500,000

Start Date: September 2010

Completion Date: November 2010

Contractor: Bond Blacktop Inc.

Resident Engineer/Construction Inspector: Paul Saini



Type II Slurry Seal

RSTP Cape Seal

Improvements: Cape Seal (Type II Slurry Seal over a 3/8 inch polymer modified chip seal), and Pavement Delineation

Cost: \$3,400,000

Start Date: June 2010

Completion Date: November 2010

Contractor: Intermountain Slurry Seal, Inc.

Resident Engineer/Construction

Inspector: Paul Saini



Pavement Delineation

ENCROACHMENT PERMITS

The Encroachment Permit Division of the Public Works Department is charged with the responsibility of providing construction inspection of projects constructed within the public right-of-way or upon public property within the County of Stanislaus relating to grading and storm water retention.

The division protects the County's interest in the construction of public improvements by assuring that the improvements are constructed in accordance with the plans, specifications, and all applicable laws to afford the greatest benefit to the public. This includes reducing and avoiding future maintenance costs, providing for public convenience and safety, and minimizing public liability.

The division substitutes for Construction Administration Field Inspectors for Federal Labor Compliance in the construction and pavement of roads, bridges and reconstruction projects. In accomplishing this mission, employees work as a team by sharing ideas and providing support for other team members as they carry out their duties.

2010 Accomplishments

- Issued 250 encroachment permits
- Encroachment and Parade Permits were made available online on the Stanislaus County website
- Inspected 30 large private commercial and agricultural projects
- Inspected 10 sewer and water transmission pipeline projects
- Finalized a seven year old Memorandum of Agreement with the City and County of San Francisco for the Hetch Hetchy Western Segment—San Joaquin Pipeline System Upgrades (the Pelican Crossover Project nearly complete)
- Turlock Irrigation District Almond 2 Power Plant-inspection and installation of 11.6 miles of 16" diameter pipeline from Ceres to the San Joaquin River
- Del Rio Water System Improvements
- New fiber optic installation from Oakdale to Knights Ferry
- The Beard Tract Water System Improvements
- Completion of street improvements for the Caesar Chavez High School and Hart-Ransom Elementary School
- Night time and weekend repair of several PG&E gas transmission pipelines
- Worked with the City of Modesto on their eight community water district projects
- Several large water and sewer projects completed for the City of Modesto in Stanislaus County right-of-way.
- The City of Modesto Water System Project to install a 24" diameter waterline along Claratina Avenue and Bangs Avenue

Engineering Services Division Construction Section (Continued)



**Installation of 11.6 miles of 16" diameter pipeline
from Ceres to the San Joaquin River**



**New Fiber Optic cable brought to his-
toric Knights Ferry from Oakdale
through Rodden Road**

**The underground cable will allow new
services such as direct signal fiber op-
tic and 10 gig high speed internet**



**Typical Orange Blossom Road
encroachment**



**The completion of street im-
provements for the Caesar
Chavez High School and Hart
Ransom Elementary School**



**Del Rio Water System
Improvements**



**Hetch Hetchy Water Pipeline
Upgrade -Western Segment**

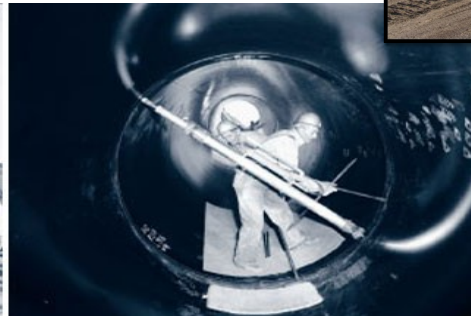
2011 Forecasted Projects

- Three large gas transmission pipeline projects
- Three large water transmission pipeline projects
- 12 commercial development projects

SAN FRANCISCO PUBLIC UTILITIES COMMISSION (SFPUC) SAN JOAQUIN PIPELINE SYSTEM (SJPL) - INSTALLED IN 1930

The pipeline system is part of the SFPUC's regional water system, providing water to the Bay Area from the Hetch Hetchy Reservoir in Yosemite National Park. Delivering approximately 260 million gallons of water per day, the regional system consists of over 280 miles of pipelines, over 60 miles of tunnels, 11 reservoirs, 5 pump stations and 2 water treatment plants. Its three existing large-diameter pipelines were built in 1932, 1953, and 1968 for a total design flow of 300 mgd. Construction on the Western Segment – starting just west of the San Joaquin River in Stanislaus County is expected to take 18 months through late Fall 2012 to install 10.3 miles of 78 inch diameter pipe.

The Eastern Segment consists of the construction of valve facilities and a new 78-inch diameter pipeline totaling approximately 6.7 miles at the eastern portion of the SJPL System near Willms Road in Stanislaus County.



PACIFIC GAS AND ELECTRIC (PG&E) GAS TRANSMISSION PIPELINES



PG&E will install 11 miles of 16" diameter gas main from the San Joaquin River to the Ceres TID Almond Power Plant. The pipeline will traverse several county roads. PG&E will install 2 miles of 24" diameter gas main from the I-5 pipeline to the Prune Avenue pipeline in Patterson. PG&E crews are currently repairing and installing several transmissions pipelines in Stanislaus County.

Engineering Services Division

County Surveyors Office



Matt Machado, PE
Director

The County Surveyor's Office is charged with the responsibility of maintaining the survey system of lands, the checking and recording of Parcel Maps, Subdivision Maps, Records of Survey and County Surveys. The County Surveyor is ex-officio deputy recorder for this purpose. The County Surveyor maintains and files corner records, deeds certificates of compliance and other documents necessary for County business. The County Surveyor's Office is also charged with conducting surveys as required by the Board of Supervisors and the Courts, working with the State Land Commission. The County Surveyor's Office provides support and expertise to all county departments. All of this while assisting the public and private practice in matters related to surveying, legal descriptions and deeds.



Services Provided

- Field Services: County surveys, survey monument preservation, data gathering, right-of-way establishment and staking, and field inspections
- Internal Indexing of benchmarks, certificates of correction, corner records, deeds and easements
- External Indexing (via County website): Records of survey, county surveys, subdivision maps, and parcel maps
- Map Checking and recording
- Legal description writing, verification and recording
- Drafting services
- Road Abandonments
- Certificates of Compliance



In addition, the County Surveyor's Office is a public resource, providing survey information and assistance to the public regarding County roadway and private land inquiries on a daily basis.

Accomplishments

- Maintained and preserved the Government Land Office (GLO) cadastral monuments
- Upgraded County survey truck
- Submitted 54 maps for checking and recording
- Verified 71 legal descriptions for Local Agency Formation Commission (LAFCO) and Planning Department
- Recorded seven County Records of Surveys
- Processed nine Certificates of Compliance
- Wrote/verified/recorded 36 easement descriptions
- Checked various boundary descriptions for LAFCO annexation and reorganizations
- Continued to electronically archive survey records
- Continue indexing archived documents to the Department's website
- Coordinated with National Geodetic Survey (NGS) and the Central Valley Chapter of California Land Surveyors Association (CLSA), to rehabilitate the County's precise calibration baseline course for accuracy

Engineering Services Division

County Surveyors Office (Continued)

2011 Goals

- Complete the Record of Survey for the Empire Re-development Project
- Integrate Survey files into G.I.S. for public access
- Upgrade the County Monument Preservation Fund by establishing a better criteria for fund use
- Update the Survey ordinances to streamline and clarify our processes
- Provide training and experience for the Survey members in the various areas of the surveying discipline



Recovery of monument in right-of-way



Larry Fontana working on the County calibration course



Witness corner located in Section 30, T.7S., R.7E



Working with M.I.D. at Shoemake Avenue and Gates Road

Road Operations Division



***Gary Hayward
Manager***

The Road and Bridge Operations Division of Stanislaus County is responsible for maintaining more than 1,600 miles of roadway. This includes drainage basins, bridges, tree maintenance, center and edge line striping, legend painting, weed abatement, shoulder and traffic sign maintenance.

During inclement weather you will find our crews in the rain, pumping storm water from flooded roads, placing warning barricades, closing roads or removing rockslides in Del Puerto Canyon.

We often work with emergency personnel at accident sites, spills, clean up, and debris removal.



Road Operations Division

(Continued)

2010 Accomplishments

- The Roads Team was instrumental in facilitating the re-organization and merging of the Public Works Department from Tenth Street Place to 1716 Morgan Road. Roads provided the resources and knowledge to complete the move without a disruption of services to the public.
- The Roads Team has worked cooperatively on paving projects with the City of Modesto, sign fabrication and installations with Cal Trans and the Cities of Riverbank, Modesto, and Turlock.
- The Bridge Team was contracted by Stanislaus County Parks to repair a bridge deck in Frank Raines Park.
- The Bridge Team has worked cooperatively on pipe replacement/repairs with the Central California, Turlock, West Side, and Patterson Irrigation Districts.
- The Paving Team worked with the Construction and Design Teams to complete the roadway preparation work for the Regional Surface Transportation Program and American Recovery Re-investment Act resurfacing projects.



Oakdale Road Widening

2010 Accomplishments (Continued)

- The Traffic Team completed 650 miles of pavement striping during a period that traffic paint was in short supply because of the economy.
- The Roads Team completed 50 miles of conventional chip seal under budget and on schedule without any claims being filed for broken windshields or damaged property.
- Skip paved several bad sections of roadway at various locations.
- Repaired cattle crossings on the Del Puerto Canyon Road.
- We have two employees that completed training classes to become the Department's in-house Electrical Team. They have run new wire to replace stolen wire at several street light locations that would have required outside services to fix. In an effort to reduce copper wire theft, this team has been trying different methods to make the chistry boxes tamper proof. They also have been repairing pump systems at storm drainage basins. The formation of the Electrical Team results in a considerable cost savings by reducing work orders sent to outside agencies and improving response times.
- Process improvements include the reassignment of a Road Supervisor and his team to concentrate on storm drainage basin and pump station maintenance. The Supervisor monitors the billing and expenditures in the Community Service Areas and the Westley Triangle Landscape and Lighting District. The lift stations in various locations have been better maintained and repaired:
 - Updated manual float systems to electronic systems
 - Rebuilt or replaced aging pumps
 - Upgraded electrical service
 - Improved weed abatement
 - Improved fences and retaining walls
 - Improved cost management of Community Service Areas
- The contract with an outside landscape company for the maintenance at the Westley Triangle Landscape and Lighting District was discontinued. The Road Department now does the maintenance of the landscaped area at a lower cost and with a quicker response time.

Road Operations Division

(Continued)

2010 Accomplishments (Continued)

- Support of the eight Municipal Advisory Committees by having a representative at the quarterly meetings to field concerns. By speaking at Municipal Advisory Board meetings and at special event coordination meetings has brought awareness to event coordinators that special events need to be self-funded. County participation in providing materials, equipment and labor required to close roads and detour traffic is now being compensated when utilizing County forces.
- Continued the Adopt-A-Road program in the communities of Hickman, Waterford and Keyes of cleaning litter from the road shoulders. Recently added to the program are the communities of Salida, Denair, Knights Ferry and Diablo Grande.
- Continued and improved the equipment training rotation program for the employees. This program encourages training and increases the employees' knowledge in every function of the Road Department. It also promotes advancement in their job classification.
- Completed defects found on the Caltrans Bridge Inspection Reports. The department has repaired guardrails, decking, approaches, signage and removed underbrush and trees.
- Used the grinder to remove several bumps and troughing areas at various locations in the County.
- Used a Deputy and inmates for weed abatement, litter pick up, tree trimming and manual labor.
- Supported the Public Works Construction and Design Teams by:
 - Completing road surface repairs prior to the slurry seal contract by skip paving, shoulder improvements and cracksealing.
 - Completing road surface repairs prior to the RSTP Cape Seal contract, shoulder grading, drainage pipe replacement, storm drain installation, tree maintenance and skip paving.
 - Placement of traffic control boards at various locations for the construction team.
 - Provided a location and personnel to receive spoils removed from the Empire Redevelopment Project.
- Contracted with Sheriff's Department for weed abatement, litter pick up, tree trimming and manual labor.



2011 Forecast

- Continue daily weed abatement activities, weed spraying and mowing.
- Continue daily pothole patching.
- Continue daily sign maintenance and sign fabrication.
- Continue painting traffic legends.
- Continue with the education and training of the Electrical Team in street light maintenance and lift station repair.
- Continue with co-operative agreements with different agencies.
- Continue the rotation-training program for the employees.
- Continue an aggressive shoulder maintenance program.
- Continue to repair defects found listed on the Bridge Reports.
- Paint 800 miles of center and edge line markings. The goal is half of the County every year.
- Dedicate an employee to work as an underground service locator, (USA).
- Skip pave and then chip seal 50 miles of roadway.
- Make sidewalk improvements on the south end of the 7th Street Bridge.
- Work with the Traffic Division in logging traffic counts by placing and retrieving the traffic counters twice a week.
- Develop a written program for the installation and reimbursement for Neighborhood Watch Programs, Special Event procedures and an explanation of Community Service Areas funding. The goal is to have these on the Internet for public viewing, such as the Adopt-A-Road Program.
- Support the Construction and Design Teams with their projects.
- Support the eight Municipal Advisory Committees.
- Research improvement ideas for the storm drainage basins.

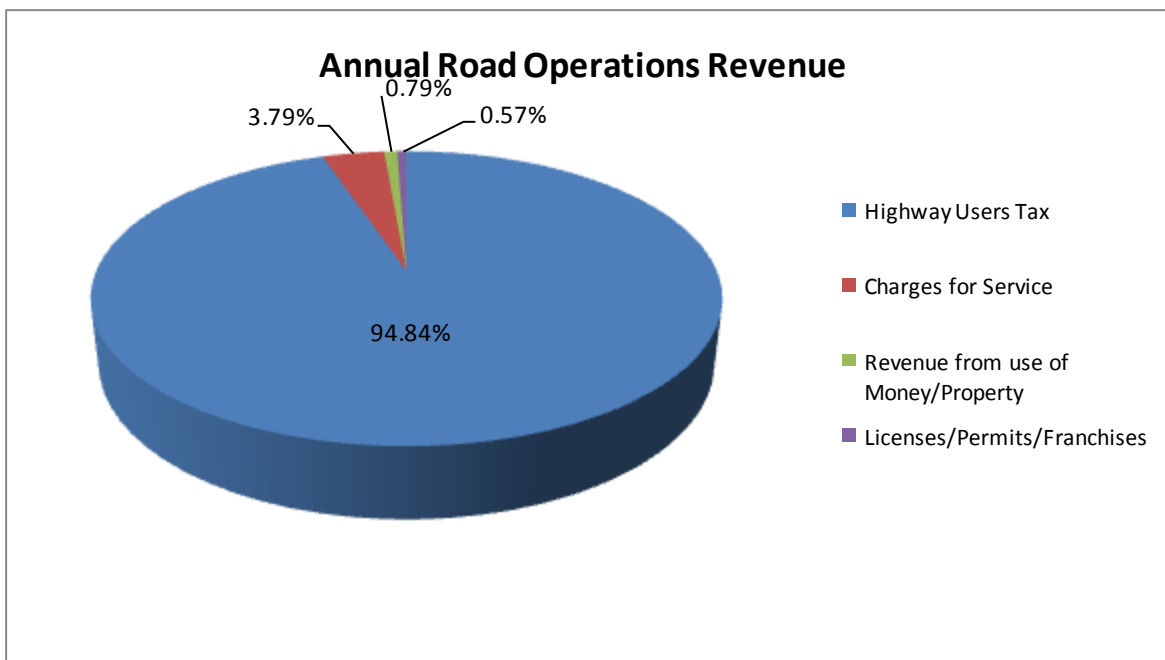
Road Operations Division (Continued)

Road & Bridge Operations Funding

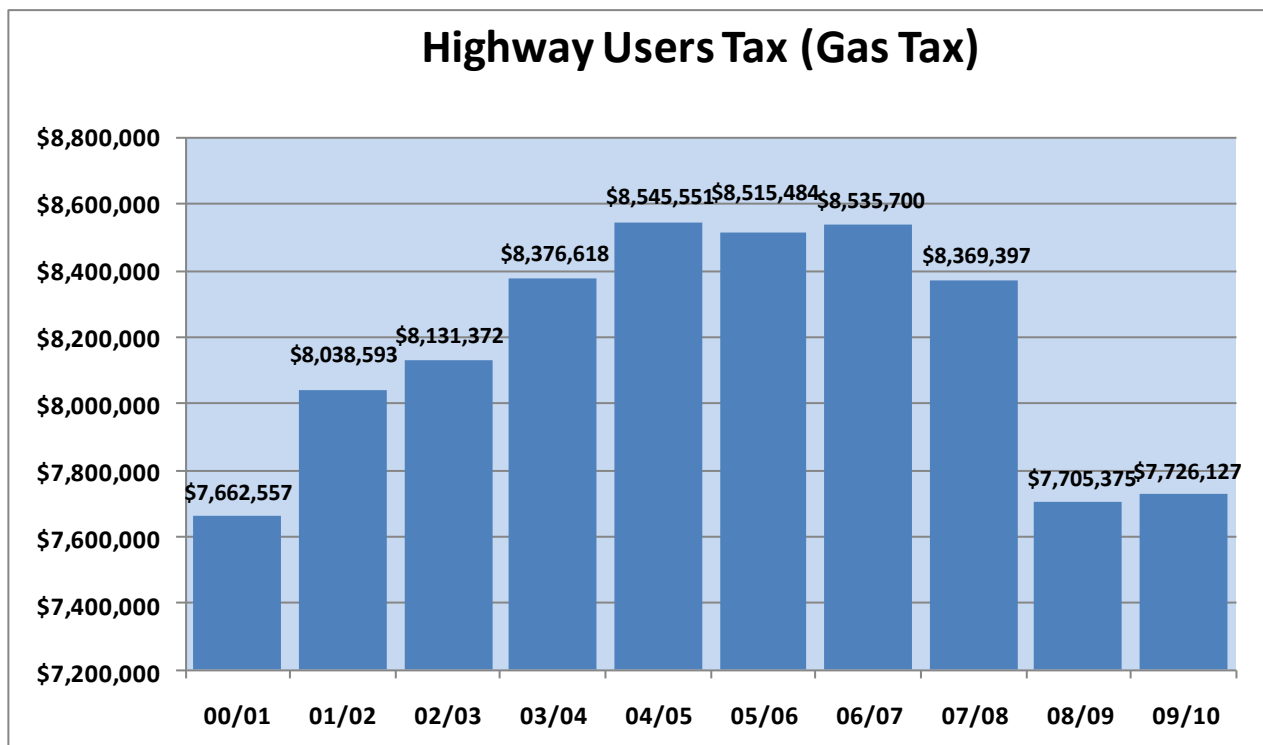
The Road Operations budget is funded primarily through the State Highway Users Tax Account (HUTA). In 2010 the State eliminated the sales tax on gasoline (proposition 42 funding) and replaced it with an additional 17.3 cent excise tax. For every gallon of motor vehicle fuel sold in California the state collects 35.3 cents of state fuel excise tax. Of those 35.3 cents, counties receive approximately 6 cents. The apportionment to counties is based primarily on the County's share of registered vehicles and county road mileage. A small portion (less than .3%, or 1.04 cents) is allocated based on registered vehicles, assessed property valuation, and population.

Of the total amount allocated to counties, Stanislaus County Public Works' portion is slightly less than 1.5%. Anticipated HUTA revenues for fiscal year 2009-2010 are \$12.3 million. These funds support routine maintenance and operations such as signal lights, patching, drainage basins, bridge maintenance, tree maintenance, center and edge line striping, legend painting, weed abatement, shoulder maintenance, and traffic sign and signal maintenance.

The chart below clearly demonstrates Stanislaus County's reliance on Highway Users Tax to support Road Operations and Maintenance. Nearly 95% of funding comes from this source.



Stanislaus County Public Work's continues to be affected by the ongoing economic crisis. Prior to fiscal year 2008-2009, Stanislaus County's allocation of Highway User's Tax (HUTA) experienced steady, if small, annual increases of approximately 2.5%. Fiscal year 2008-2009 saw approximately a 10% reduction in this source of income, regressing to the level of fiscal year 2000-2001. Unfortunately 2009-2010 revenue was only slightly higher than the previous year. Although anticipated HUTA revenue for fiscal year 2010-2011 is considerably higher than recent years, the increase is due to the State's swap of Proposition 42 funds with HUTA funds. The overall impact of this swap is revenue neutral.



Morgan Shop Division



Mel Eslinger
Manager

Morgan Shop is an Internal Service Fund (ISF) operation that provides equipment and vehicles to other Public Works divisions, primarily the Road & Bridge Division. The user divisions pay a rental rate to Morgan Shop when using equipment and vehicles. Morgan Shop provides vehicle and equipment maintenance as requested to other County Departments. In addition, Morgan Shop assists with the research and procurement of vehicles and equipment for other County Departments. Morgan Shop also provides Compressed Natural Gas (CNG), unleaded, and diesel fueling to County Departments and CNG fueling to other local jurisdictions.





2010 Accomplishments	2011 Forecasted Projects
<ul style="list-style-type: none">• Trained road personnel on safe operation of heavy equipment.• Developed a maintenance and repair plan for the 30 storm drain pump stations.• Continued to maintain and comply with new and existing Air Resources Board Regulations on all affected equipment.• Purchased alternative fuel vehicles to include a storm drain cleaner, road broom, asphalt roller, bobcat, and towable air compressor.• Acquired 4 message boards for traffic control and safety.• Purchased 2 diesel particulate filters for off-road vehicles to upgrade older tier engines.• Created an operations manual for Compressed Natural Gas Station (CNG).• Evaluated the use of Bio-Diesel as an alternative fuel source.• Upgraded surveillance cameras for security of County Center IV.• Expanded customer base to other municipalities.	<ul style="list-style-type: none">• Continue to enhance accident prevention training for road personnel on heavy equipment operating procedures.• Continue to maintain and repair the storm drain pump stations and generators.• Upgrade old float and pump stations from manual to electronically controlled systems.• Continue to maintain and comply with new and existing Air Resources Board Regulations on all affected equipment.• Provide Shop technicians with electrical training and requirements related to equipment.• Purchase alternative fuel vehicles to include: 2 water trucks, 1 2-axle truck, 3 dump trucks, 1 forklift, 2 sign trucks, 3 loaders, 2 graders, 1 backhoe, and 1 street sweeper.• Purchase 1 diesel particulate filter for on-road vehicles to upgrade older engine.• Purchase Bio-Diesel as an alternative fuel source.• Create and implement a Spill Prevention Control Counter Measure.



Transit Division



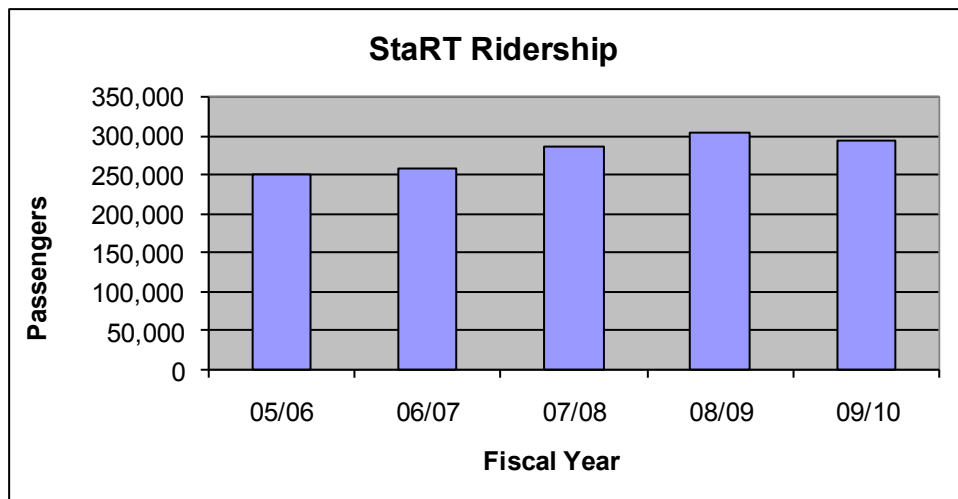
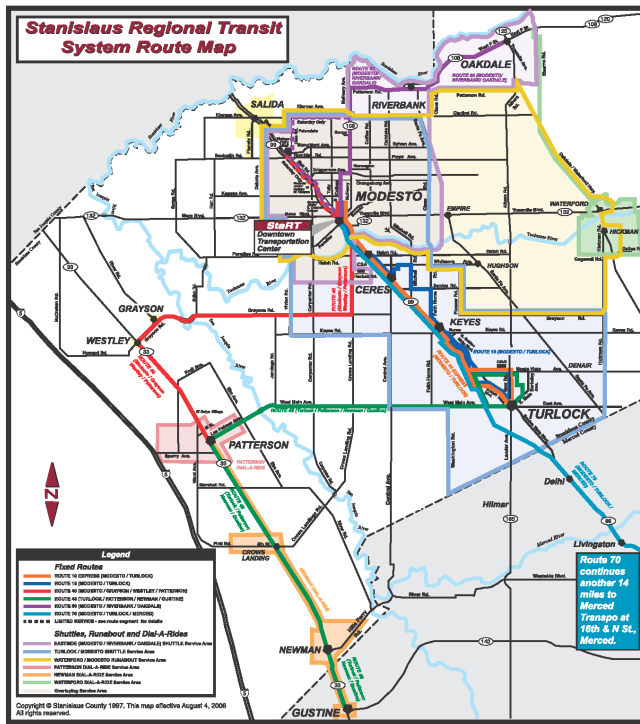
***Brad Christian
Manager***

The Public Works Transit Division oversees the operation of Stanislaus Regional Transit (“StaRT”), the County’s intercity public transportation system.

StaRT operates 13 different services, providing fixed route, deviated fixed route and demand response transportation to 18 cities and communities and Medivan non-emergency medical transportation to Bay Area medical facilities.

The Transit Division, through Memorandums of Understanding, operates Dial-a-Ride services for the cities of Newman, Patterson, and Waterford.





StaRT ridership increased 18% over the last five years

Transit Division

(Continued)



StaRT provides service to four area colleges.

Did you know that according to the American Public Transit Association:

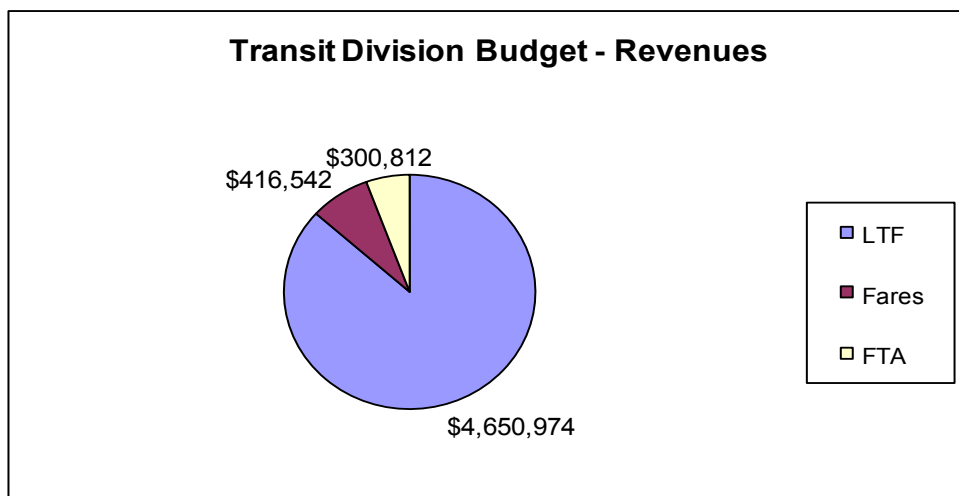
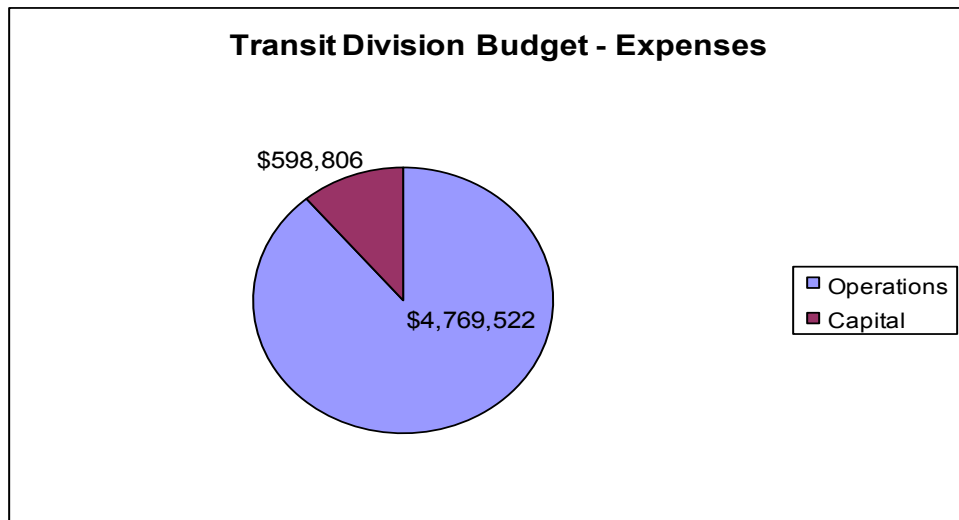
- For every \$1 invested in public transportation, \$4 in economic returns is generated.
- Public transportation is a \$48.4 billion industry that employs more than 380,000 people.



In FY 09/10, StaRT buses carried 20,422 bikes on its routes.

FY 10/11 Transit Division budget is \$5,368,328 (\$4,769,522 operations and \$598,806 capital costs).

- The funding sources are:
 - Fare Revenues collected from services
 - State Funds -
 - Transportation Development Act Local Transportation Funds (LTF) - Derived from a quarter cent of the state sales tax
 - Transportation Development Act State Transit Assistance Funds (STAF) – Derived from excise and sales tax on diesel and gasoline fuels
 - Federal Funds -
 - Federal Transit Administration (FTA) 5311 – Federal non-urbanized area grant



Transit Division (Continued)



In FY 09/10, StaRT staff participated in over 25 public information events.

Administration Division



Diane Haugh
Assistant Director

The Administration Division provides support to the remaining divisions within Public Works. Areas of support are clerical, financial, special districts, and safety. Clerical support is in the areas of board agenda items, human resources and other ongoing daily needs necessary for the smooth running of the department. Financial support is provided by way of budgeting, payroll processing, accounts payables and receivables.



Administration Division

(Continued)

Finance Section

The Finance Division is responsible for accounting, budgeting, contracting, accounts payable, accounts receivable, purchasing, and payroll. The employees in this division ensure that the Department is following all the County's financial policies, safeguarding public funds.

The Finance division has five full-time staff overseeing Public Works \$67 million budget. They perform the day to day functions that keep the department running smoothly.

A few of this year's accomplishments are:

- Invoiced Caltrans a total of \$6,517,558 for Road Project reimbursements.
- There were no major findings or recommendations for the Department's purchasing card audit of Fiscal Year 2009-2010.
- Took the next step in integrating the Cost Accounting Management System payroll reports with the County payroll system. A pilot program should be operational by early 2011.
- Completed and submitted the 2009 Annual Road Report to the State of California. The annual road report must be submitted to the State by October 1st of the fiscal year. Stanislaus County submitted the report in August, 2010.
- Transferred responsibility for the annual budgets, public hearings and engineer's reports for County Service Areas, Lighting Districts, Landscape and Lighting Districts and Storm Drain Districts from Public Works Engineering to Public Works Finance and Administration.
- Moved three Finance Division Staff from Tenth Street Place offices to the Morgan Road facility. We also reorganized the structure of the Finance Division personnel to create a more fluid atmosphere. This will enhance our ability to provide efficient delivery of public services, in accordance with Stanislaus County Board of Supervisors Priorities.

Administrative Support Section

The Administrative Support Services Division provides clerical support to other Public Works' divisions. Support staff is located at the Morgan Road office. Their role includes the preparation of Board agenda items, human resources, safety program strategic planning, answering phones, processing mail, and a variety of other miscellaneous but highly necessary tasks that ensure the Department operates smoothly.

In the past year these individuals:

- Processed 97 Board Agenda items.
- Conducted 12 recruitments.
- Processed new hire packets for 10 individuals.
- Logged and followed up on 1,500 customer comments and/or concerns through Stanislaus County's Customer Response Management System.
- Coordinated the relocation of Public Works employees from the main building at Morgan Road to modulars located behind the building.
- Coordinated the move/relocation of Public Works employees from Tenth Street Place to the Morgan Road office.
- Assumed the responsibility for processing Parade-Special Event Permits.
- Developed and implemented process changes to ensure quick efficient customer service to Public Works customers and staff members.
- Edited and produced the Public Works quarterly newsletter ("In the Works").
- Edited and produced the Public Works Annual Report.



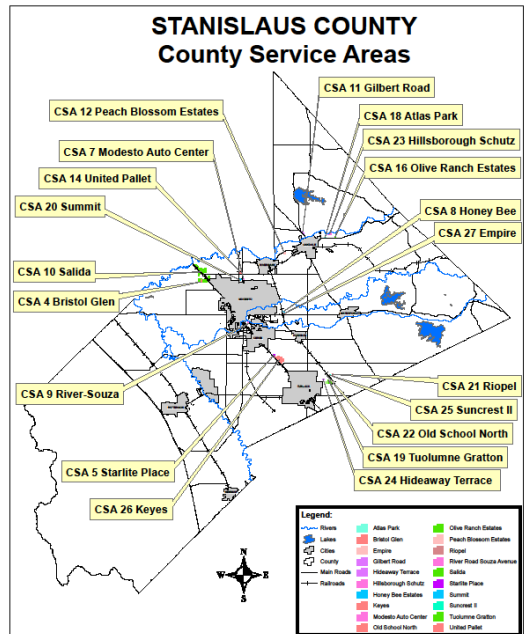
Administration Division (Continued)

County Services Area / Lighting Districts / Stormwater Administration

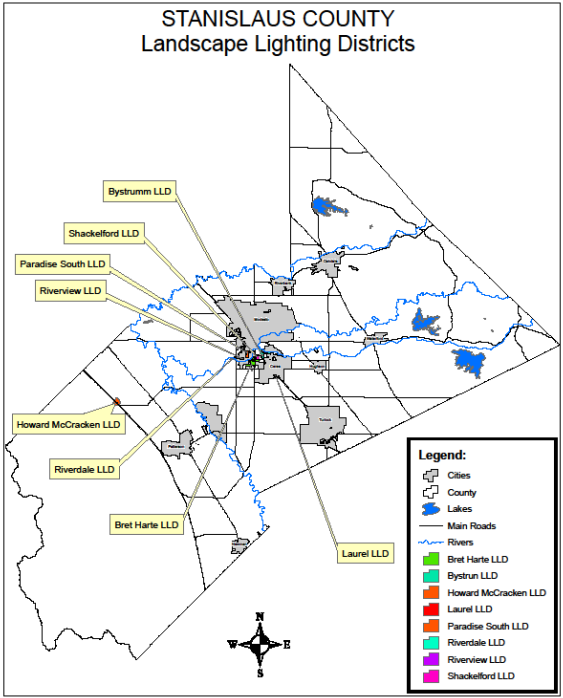
The County Services Area (CSA)/Lighting Districts (LD)/Stormwater Administration Section includes the formation and management of special benefit districts to provide storm water management, landscaping, street lighting and other special benefits to local communities.

2010 Accomplishments

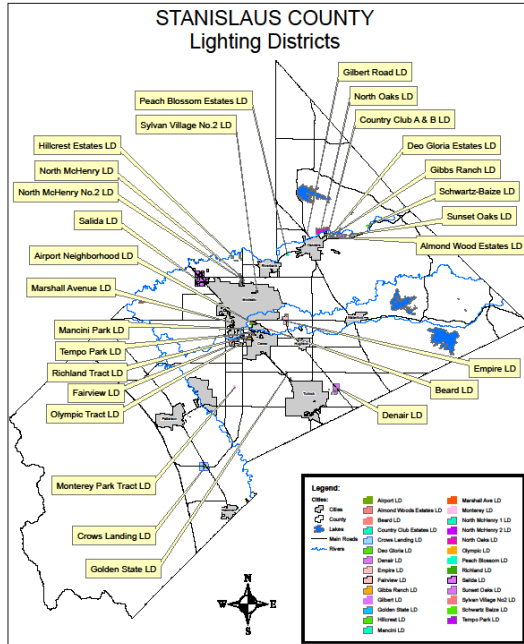
- Empire CSA 27— Passed
- Grayson CSA — Vote Failed
- Updated GIS Layouts for all:
 - County Services Areas (CSA's)
 - Landscape and Lighting Districts (LLD's)
 - Lighting Districts (LD's)



Stanislaus County Public Works
Mike Wilson
0 5 10 20 Miles
JULY 2011



Stanislaus County Public Works
Mike Wilson
0 5 10 20 Miles
JULY 2011



Stanislaus County Public Works
Mike Wilson
0 5 10 20 Miles
JULY 2011

2011 Forecasted Projects

- Airport Alley Lighting—Passed
- North McHenry Assessment Formula—Failed
- Formation of Kenwood Park LD
- Formation of Bangs/Summit CSA
- Howard McCracken LLD
- Update GIS Layouts for all CSA's, LLD's, and LD's
- Create spreadsheets for:
 - Assessment formulas for all CSA's, LLD's, and LD's
 - Assessment history for all: CSA's, LLD's, and LD's
 - Public Hearing and Assessment ballot process
- Print and laminate District maps for Public Works staff for all districts: CSA's, LLD's, and LD's
- Shackelford LLD Annexation to City of Modesto
- Parkview Estates Annexation to Salida Lighting District
- Streetlight Inventory—Count, wattage, locations
- Streetlight utility bill verification—Count and wattage
- Update process binders
- Mapping storm drain basins not in CSA's



Administration Division (Continued)

Safety



Public Works is on its way to achieving a new record for the most consecutive accident free days. At the end of 2010 we were 191 days accident free.

These numbers are amazing feats when you take into consideration the risk involved in the Roads division's daily duties. Even though "new" laws were implemented, such as the "Hands Free" and the "Move Over" law, motorists continue to remain distracted. Every day that goes by that we are accident free is a new second place record.

Our Safety Incentive Program, "BINGO" has been fun and profitable. We spent \$8,125 in "Bingo" gift cards, which translates to 325 "Bingo's". Although there is no way to determine how much we have saved, the fact that we have remained uninjured is priceless! The most exciting news is that the severity of the injuries that we have sustained went way down. We had 10 injuries as a Department in the Fiscal Year 2009-2010. Most of these injuries were minimal and the employees immediately went back to work. This means that the cost of claims went down dramatically as well. Our goal cost for Fiscal Year 2009-2010 was not to exceed \$100,000. Our actual cost was \$56,898 for the year. Our Goals for Fiscal Year 2010-2011 are as follows:

- Number of accidents not to exceed 8
- Cost of Medical Only not to exceed \$5,000
- Cost of Indemnity not to exceed \$75,000
- Unsafe acts and conditions to be corrected immediately



The classification of the injury most sustained for the year, was a "Strain." Know your limits and do not be afraid to ask for help. A strain is a very painful injury that not only makes it difficult to work, it can also make everyday chores seem impossible.

The "Safety Suggestion" box is located in the Morgan Road break room. Employees may feel free to jot down any safety related information for review. It can be suggestions for an unsafe condition, an idea for gift card purchases, or safety classes they would like to attend. Employees may remain anonymous.

The bulletin board that is along the east wall as you exit the building is kept up to date with safety training information as well other safety related information.

Congratulations Public Works team on a safe and productive year!

Geographic Information Systems Division



***Peou Khiek
Manager***

The Geographic Information Systems (GIS) Division is a transforming technology allowing the County to view and analyze data from a geographic perspective. It can integrate different systems to save valuable resources and streamline workflow processes. Stanislaus County Public Works staff are responsible for, but not limited to the County's GIS basemap and layers. In addition, they also provide mapping services to other County Departments and agencies.



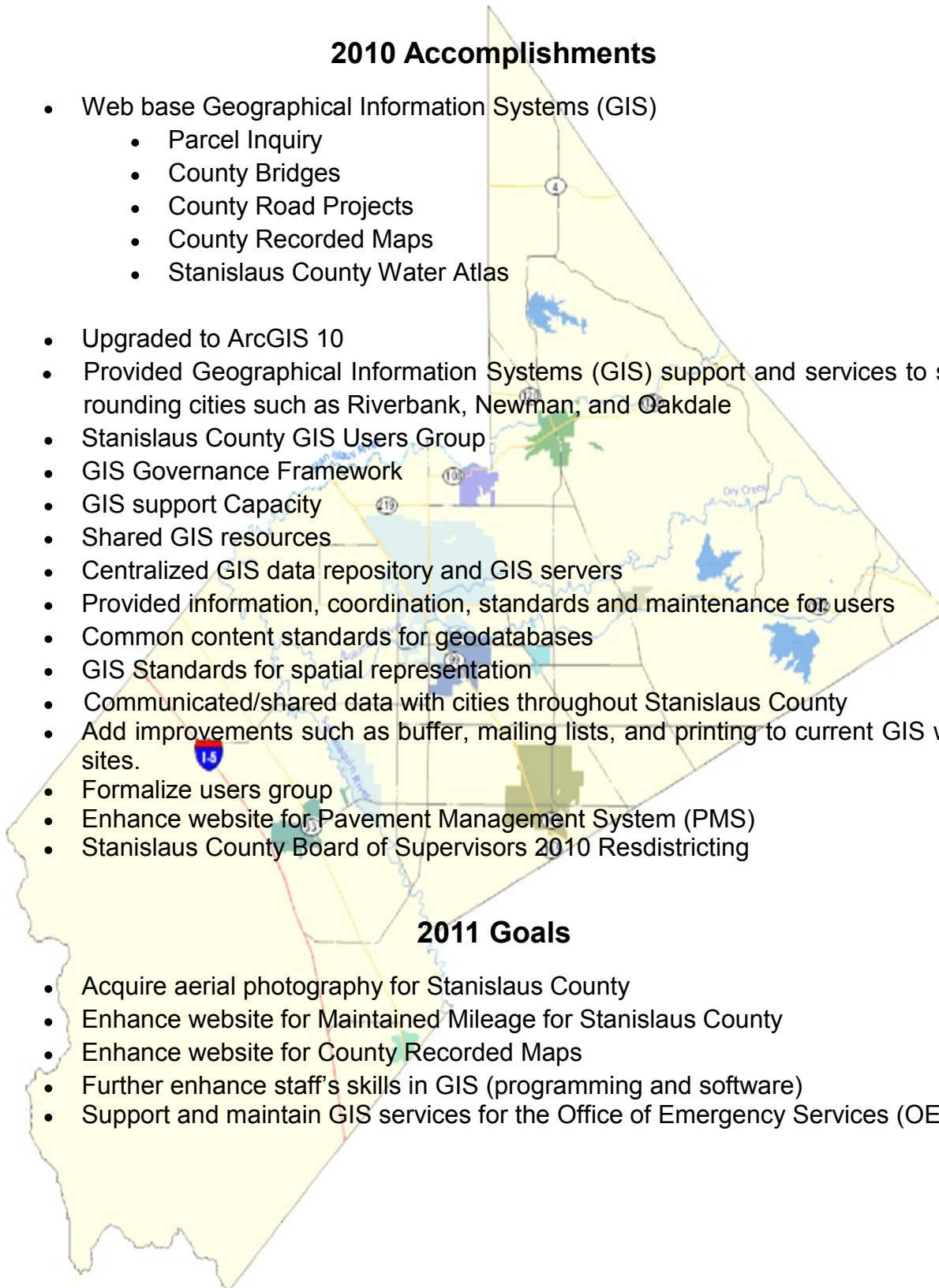
Geographic Information Systems Division (Continued)

2010 Accomplishments

- Web base Geographical Information Systems (GIS)
 - Parcel Inquiry
 - County Bridges
 - County Road Projects
 - County Recorded Maps
 - Stanislaus County Water Atlas
- Upgraded to ArcGIS 10
- Provided Geographical Information Systems (GIS) support and services to surrounding cities such as Riverbank, Newman, and Oakdale
- Stanislaus County GIS Users Group
- GIS Governance Framework
- GIS support Capacity
- Shared GIS resources
- Centralized GIS data repository and GIS servers
- Provided information, coordination, standards and maintenance for users
- Common content standards for geodatabases
- GIS Standards for spatial representation
- Communicated/shared data with cities throughout Stanislaus County
- Add improvements such as buffer, mailing lists, and printing to current GIS web sites.
- Formalize users group
- Enhance website for Pavement Management System (PMS)
- Stanislaus County Board of Supervisors 2010 Resdistricting

2011 Goals

- Acquire aerial photography for Stanislaus County
- Enhance website for Maintained Mileage for Stanislaus County
- Enhance website for County Recorded Maps
- Further enhance staff's skills in GIS (programming and software)
- Support and maintain GIS services for the Office of Emergency Services (OES)



Community Involvement

Mentoring 2010



"The important thing about Mentors is that they are loving friends. They are caring, humorous and cool. We read and talk with them, sharing stories. Mentors are intelligent and generous. But the important thing about mentors is that they are loving friends."

This was adapted by the Protégées of John Muir School and presented to their Mentors for the School Year 2009-2010. Stanislaus County Public Works Director Matt Machado and Account Tech Sharon Andrews were mentors at John Muir School and contributed 77 hours of their combined time to the Academic Intervention Model (AIM) reading program.

For the 2010-2011 school year, Public Works has doubled the number of AIM mentors by recruiting Deputy Director Laurie Barton and Assistant Director Diane Haugh. The AIM program is a lunchtime program for Stanislaus County employees to help local area students improve their reading and math skills at four participating schools in the Modesto area. To date, Stanislaus County employees have contributed a whopping 10,152 hours to the program.



Community Involvement (Continued)



Heart Walk 2010



Public Works employees raised \$1,343.80 for the American Heart Walk 2010 and had a team of eight walkers that participated in the September 25, 2010 Heart Walk at MJC East. The event raised a total of \$172,234 to help fund education, research and treatments for heart disease and stroke. Heart Disease is the #1 Killer of Adults in the United States.

United Way 2010



Public Works employees donated \$1,104 to the 2010 Stanislaus County United Way Campaign. Part of the Public Works donation came from our first "Best Salsa" contest. Nachos and cheese were furnished and for a \$2 donation employees could vote for their favorite "Salsa". All proceeds from this fundraiser went to United Way of Stanislaus County in the name of the contest winners to the charity of their choice. The winner of the contest was Matt Machado, Director and his charity of choice was the Boys Scouts of America.

Holiday Giving 2010



Each year during the holidays, the Public Works Department organizes to give to our local community. This year we participated in the Community Services Agency's (CSA) 13th Annual Holiday Tree Gift Giving and Howard Training Center's Santa for Seniors Program.

We sponsored five foster children through CSA's Child and Family Services Division (CFSD). The children ranged from one year to 16 years old. Public Works staff generously purchased clothing and toys from the children's wish lists.

Through the Howard Training Center, we sponsored six seniors. Public Works staff purchased clothing and a minimum of one item from their wish lists.

CONTACT US

Department of Public Works

Website: www.stancounty.com/publicworks



1716 Morgan Road, Modesto 95358

Administration Division	525-4130
Administration Fax	541-2505
Finance Fax	541-2511
Engineering (Design, Traffic, Construction).....	525-4130
Design, Traffic Fax.....	541-2509
Construction Fax.....	541-2506
County Surveyors Office	525-4130
Fax.....	541-2505
Heavy Equipment Shop.....	525-4130
Fax.....	541-2512
Geographic Information Systems (GIS).....	525-4130
Fax.....	541-2505
Road Operations	525-4130
Fax.....	541-2513



1010 10th Street, Suite 4200, Modesto 95354

Permits (Encroachments, Transportation)	525-4130
Fax.....	525-6507
Transit	525-4130
Fax.....	525-4332

You may also contact us by submitting your questions or concerns online at: www.stancounty.com/customercenter or by contacting Stanislaus County's assistance hotline at 1-877-2ASSIST (1-877-227-7478).

Stanislaus County Board of Supervisors



William O'Brien
District 1



Vito Chiesa
District 2



Terry Withrow
District 3



Dick Monteith
District 4



Jim DeMartini
District 5

