



# “In the Works”

Striving to be the Leading Public Works Department  
Through Innovative Stewardship of Infrastructure  
and Environment

Stanislaus County  
Public Works

Volume 9, Issue 2  
June 2017

## Geer Road and Santa Fe Avenue Intersection Signalization

Submitted by Shoab Ahrary

The existing intersection of Geer Road and Santa Fe Avenue is located in Stanislaus County, about 1.5 miles southeast of the City of Hughson. Existing traffic control is all-way stop signs with a central flashing red signal. A railroad at-grade crossing is located south of Santa Fe Avenue; vehicular traffic is controlled with flashing red warning signals and cross arms in both directions. There are no existing segregated turning lanes at the intersection. The intersection would be signalized and widened to accommodate existing traffic operations, to include left turn lanes on all four approaches and dedicated right turn lanes on southeast-bound Santa Fe Avenue and northbound Geer Road. Additional widening will be provided to accommodate needed lane transitions and shoulder area. Each approach will provide a through lane and a left turn lane. Widening and required transitions will extend from the intersection center north and south along Geer Road, and northwest and southeast along Santa Fe Avenue, for a total of 4,200 linear feet.

Signalization will involve the installation of foundations, poles, and mast arms to support the proposed signal assemblies, street name signs, and luminaires as well as control boxes and other related equipment. Multi-phase control would be provided to accommodate anticipated turning movements on all four approaches. The improved roadway sections would be restriped and signed in accordance with county and state standards. The project also involves some railroad crossing improvements, such as a change in cross arms. Equipment and materials staging for the project will occur within existing County road right-of-way. No new right-of-way acquisition is required.



Geer Road looking south towards the existing Santa Fe Avenue intersection



### Inside this issue:

<i>Geer Road and Santa Fe Avenue Intersection Signalization (cont'd)</i>	2
<i>32nd Annual Public Works Secretarial Seminar</i>	3
<i>Road Rage — Three Guiding Principles to Avoid Being a Victim</i>	4
<i>Public Works Staff Updates</i>	4

### "Health & Safety Byte"



**Safety is no accident!**

### Word of the Quarter

**Patience**

### Ethics Quotes

Nicholas Sparks

“In the end, you should always do the right thing even if it’s hard.”

Continued on page 2



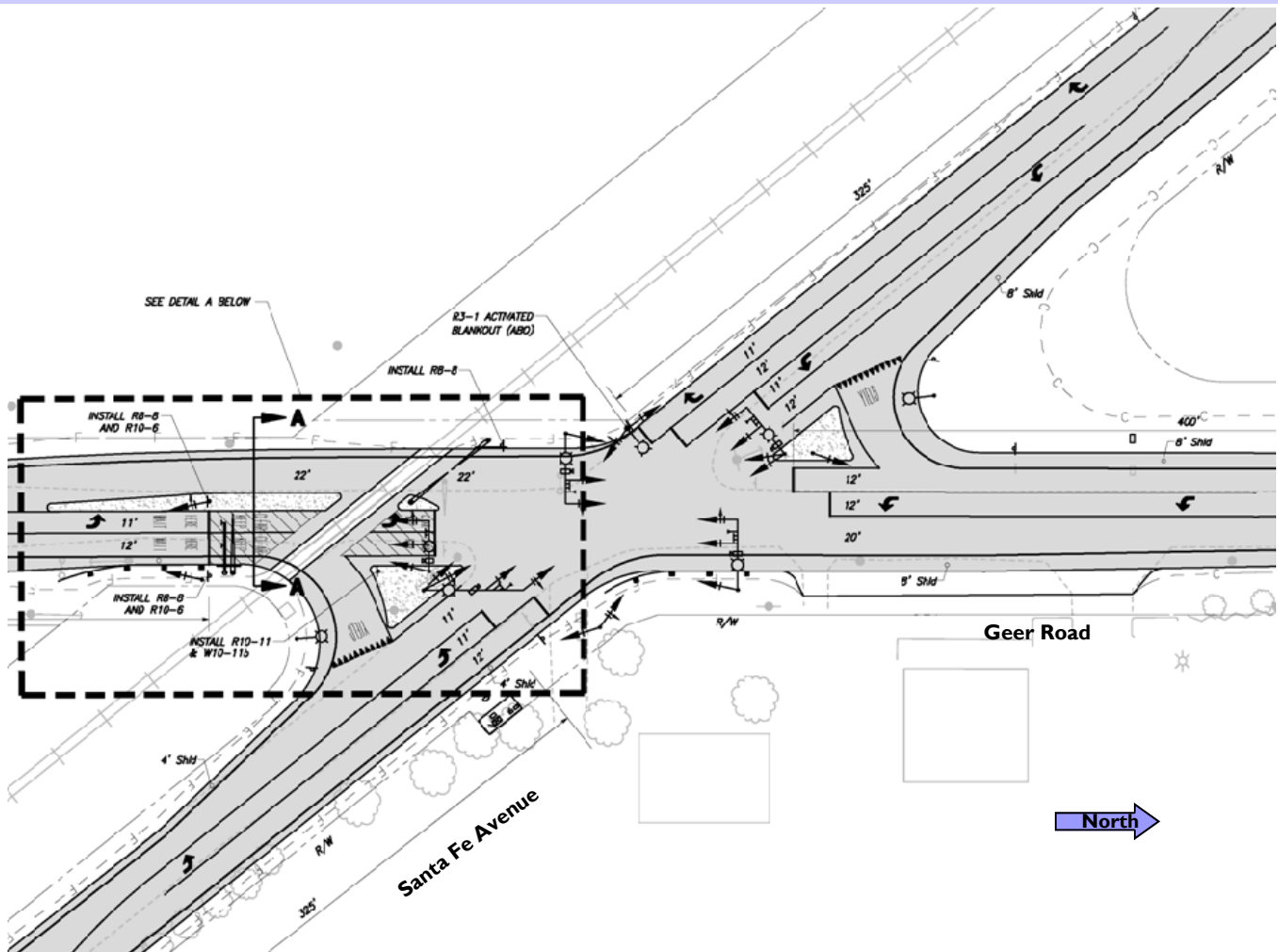
## Geer Road and Santa Fe Avenue Intersection Signalization (cont'd)

Through the request for proposal process, Public Works contracted with Mark Thomas & Company in March of 2016 to provide the engineering services and complete the Preliminary Engineering phase of the project. Mark Thomas assisted the County with the environmental clearance, utility coordination, right-of-way clearance and delivery of the final Plans, Specifications and Estimates (PS&E). County received the approval of the at-grade crossing from California Public Utilities Commission on March 27, 2017. County received National Environmental Protection Act (NEPA) clearance on May 4, 2017. The Board of Supervisors approved the grade crossing signal installation agreement with Burlington Northern Santa Fe railroad (BNSF) and was executed on June 14, 2017. The right-of-way clearance certification which included the utility relocation coordination was submitted to Caltrans on June 27, 2017. Currently Mark Thomas is finalizing the PS&E for construction.

The project is on schedule to be advertised this fall so it can be awarded to a contractor in the winter. With a contract in place during the winter, then work can start as soon as the weather permits. Worst case scenario is to start construction in the spring. The construction phase is expected to be completed within six months from start date.

To minimize traffic delays and impacts to the surrounding communities, one of the objectives is to reduce the road closures during construction phase. The primary closures will be for the accommodation of the railroad work that will be performed by BNSF's contractors.

The project is funded with a combination of Federal Congestion Mitigation and Air Quality (CMAQ) funds, Measure "L" funds and County Public Facility Fees (PFF) funds. The construction phase of the project is estimated at \$3,015,000 with \$653,340 of work to be completed by BNSF.





## 32nd Annual Public Works Secretarial Seminar

Submitted by Denae Davis & Keimi Espinoza

The Department of Public Works is about building and maintaining infrastructure through innovation and collaboration for the betterment of the communities we serve. Every year, the County Engineer's Association of California (CEAC) chooses a different Public Works department from one of the 58 counties around the State of California to host the "Public Works Secretarial Seminar" (PWSS). At this seminar, participants gather from different county and city agencies for an opportunity to network with peers within the same field, make contacts, visit local businesses, and receive insightful training.

In late April, Stanislaus County and Merced County Public Works co-hosted the 32nd Annual PWSS in Modesto, which was the first time for both of our counties. Our theme was "Better Together" emphasizing the strength and importance of counties and cities working together. We had 52 attendees from as far south as Imperial County and as far north as Humboldt County.

Chairman Vito Chiesa, Stanislaus County Board of Supervisors, gave affirmative opening remarks at our welcome dinner. It was a wonderful way to kick-off our seminar. We would like to recognize our executives who allowed us to take charge of our seminar; Matt Machado, Stanislaus County Public Works Director, County Surveyor and Road Commissioner, and Richard Schwarz, Merced County Assistant Director of Public Works. Our PWSS committee members from Merced County were Janet Resch and Kristie Williams, and from Stanislaus County were Denae Davis and Keimi Espinoza.

We had informative and timely topics such as:

- \* Geographic Information Systems (GIS) - Aron Harris, Stanislaus County Strategic Business Technology
- \* Continuity of Operations Planning (COOP) - Chief Dale Skiles, Stanislaus County Office of Emergency Services Fire Warden/Assistant Director
- \* Security - Lieutenant Dennis Cordova, Stanislaus County Sheriff's Department and Ron Reid, Stanislaus County Office of Emergency Services
- \* Transportation Funding - Matt Machado, PE, LS, Stanislaus County Public Works Director, County Surveyor, and Road Commissioner
- \* Merced County's new Behavioral Health and Recovery Services construction - Richard Schwarz, Architect, LEED AP, Merced County Assistant Director of Public Works

Another part of our seminar was a guided bus tour around Modesto. David Leamon, PE, Stanislaus County Public Works Deputy Director was our tour guide. Highlights of the tour were the Tuolumne Park and the historic 7th Street Bridge (also known as the Lion Bridge), which is over 100 years old. We also had a walk through tour of Stanislaus County's Public Works new administration and roads/shop construction project. Our optional Friday afternoon trip was to Castle Air Museum in Merced where we had a docent led tour of a retired Air Force One used by five former Presidents!

We thank our many sponsors and local businesses for their support, and to our co-workers who helped behind the scenes for making this PWSS **one for the books!**





**Public Works**  
1716 Morgan Road  
Modesto, CA 95358-5805

Phone: 209-525-4130  
Fax: 209-541-2505

1010 10th Street, Suite 4204  
Modesto, CA 95354-0870

[www.stancounty.com/publicworks](http://www.stancounty.com/publicworks)

Articles by Public Works Writers  
Published by Keimi Espinoza 

Stanislaus County's Assistance Hotline:

1 (877) 2ASSIST / 1 (877) 227-7478

Stanislaus Regional Transit

**StaRT**

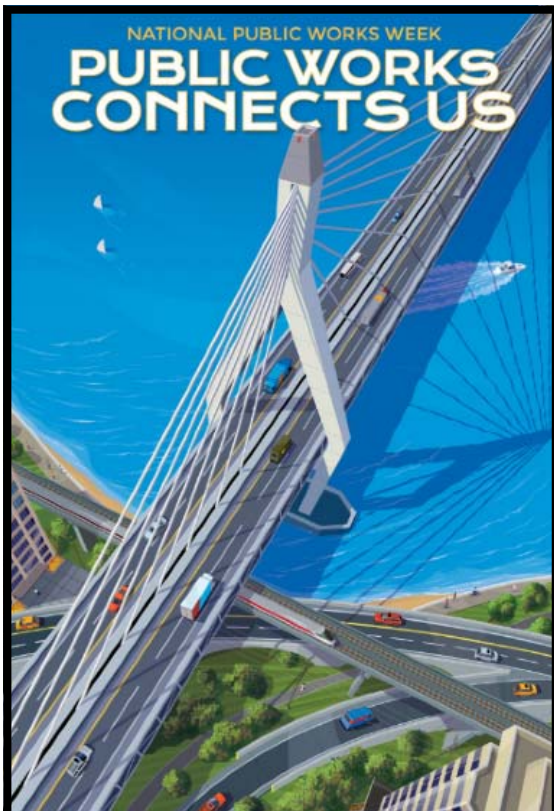
Transit Division's website is:

[www.srt.org](http://www.srt.org)

For route info call **StaRT** at  
1-800-262-1516



Follow us on Twitter @dpwmachado



May 21—27, 2017

## ROAD RAGE

Submitted by Deborah Hawkins

**ROAD RAGE** is defined as violent anger caused by the stress and frustration involved in driving a motor vehicle in difficult conditions. How can you avoid being the victim of an aggressive driver? Here are three basic guiding principles that can help: The link below has more information on each of these three guidelines. Please take a look, it is information that could save your life.

### 1. DON'T OFFEND

- Cutting off - When you merge, make sure you have plenty of room. If someone cuts you off, slow down and give them room to merge into your lane.
- Driving slowly in the left lane - If you are in the left lane and someone wants to pass, move over and let them by.
- Tailgating - Allow at least a two-second space between your car and the car ahead. If you feel you are being followed too closely, signal and pull over to allow the other driver to go by.
- Gestures - Keep your hands on the wheel. Almost nothing makes another driver angrier than an obscene gesture.

### 2. DON'T ENGAGE

- Steer clear - Do not under any circumstances pull off to the side of the road and try to settle things "man to man."
- Avoid eye contact - If another driver is acting angry with you, don't make eye contact.
- Get help - Call the police or drive to a place with people around. Do not get out of your car and do not go home.

### 3. ADJUST YOUR ATTITUDE

- Forget winning - Allow more time for your trip. Try to make your driving time more relaxing and not so stressful.
- Put yourself in the other driver's shoes - There could be reasons someone is constantly changing lanes, crying baby, rushing to the hospital or to a sick child. Stay cool and don't take other drivers' actions personally.
- If you think you have a problem, ask for help. Drivers who successfully "reinvent" their approach to the road report dramatic changes in attitude and behavior.

<https://www.aaafoundation.org/sites/default/files/RoadRageBrochure.pdf>

## Public Works Staff Updates

**Promotion:** Wes Eslinger has been promoted to Senior Road Maintenance Worker on 5/5/17.

*Congratulations!*

### **New Employees:**

**Kyle Bizzini, Matt Rand, Kevin Riggs, and Matt Slusher** (Road Maintenance Worker I) joined our Roads & Bridges team on 5/30/17.

*Welcome!*

### **Births:**

**Casey Roberts** (Road Maintenance Worker III) has a son named Jones born on 4/18/17.

**Michael Maldonado** (Road Maintenance Worker I) has a daughter named Eliza born on 6/22/17.

*Best wishes!*

