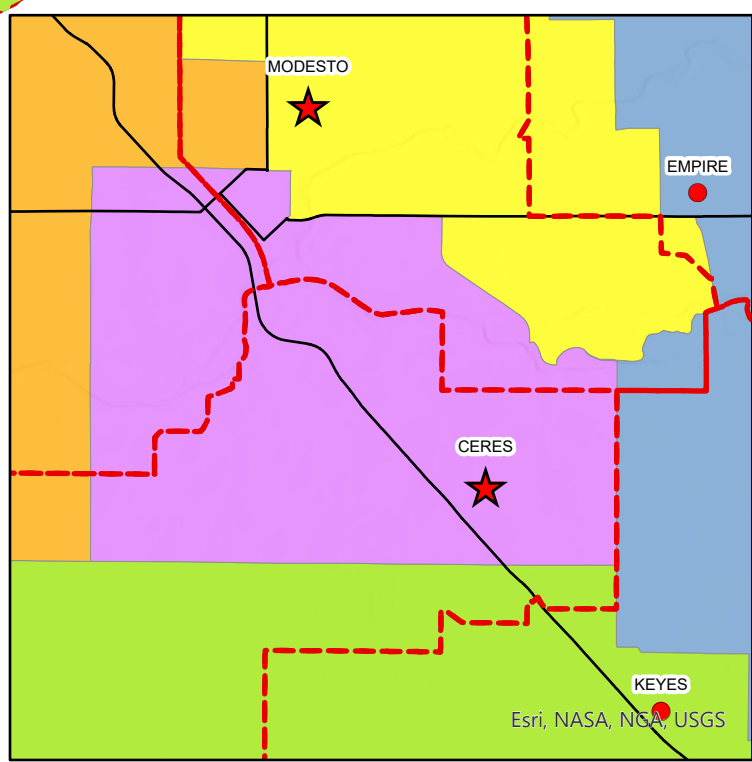
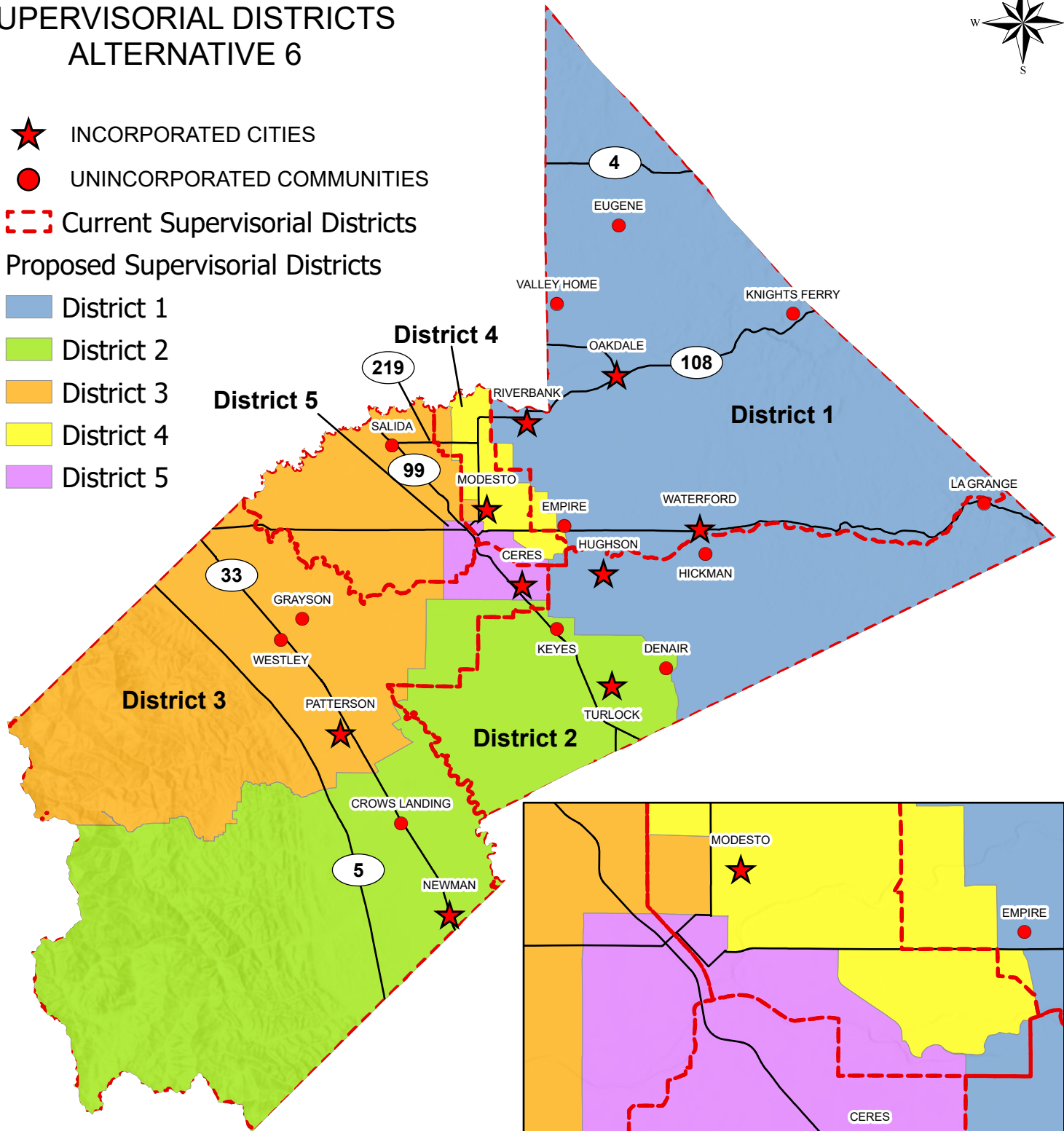


STANISLAUS COUNTY SUPERVISORIAL DISTRICTS ALTERNATIVE 6



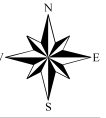
- ★ INCORPORATED CITIES
- UNINCORPORATED COMMUNITIES
- Current Supervisorial Districts

- Proposed Supervisorial Districts
- District 1
 - District 2
 - District 3
 - District 4
 - District 5



Esri, NASA, NGA, USGS

District 1 - Supervisorial Alternative Map 6



Changes to District 3 from Current District

Alternative 6 District Boundary

Proposed Supervisorial Districts

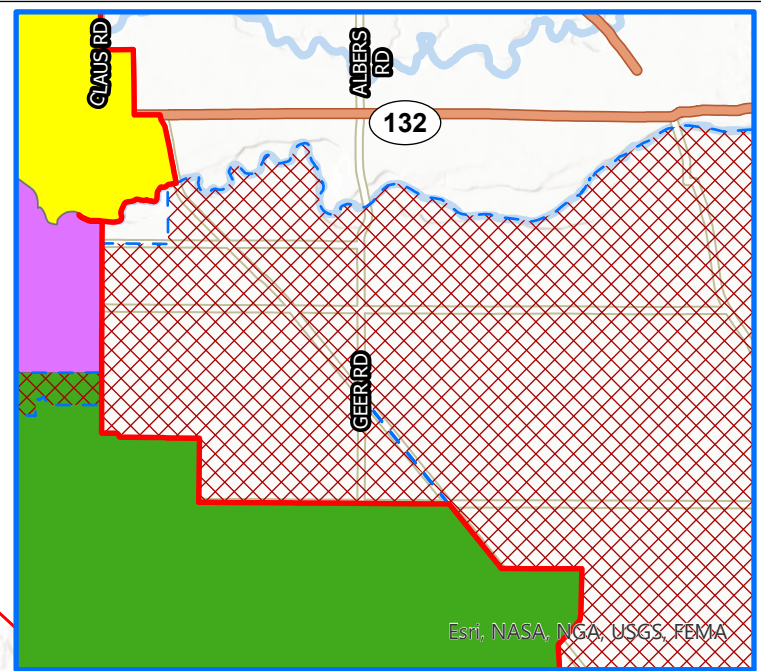
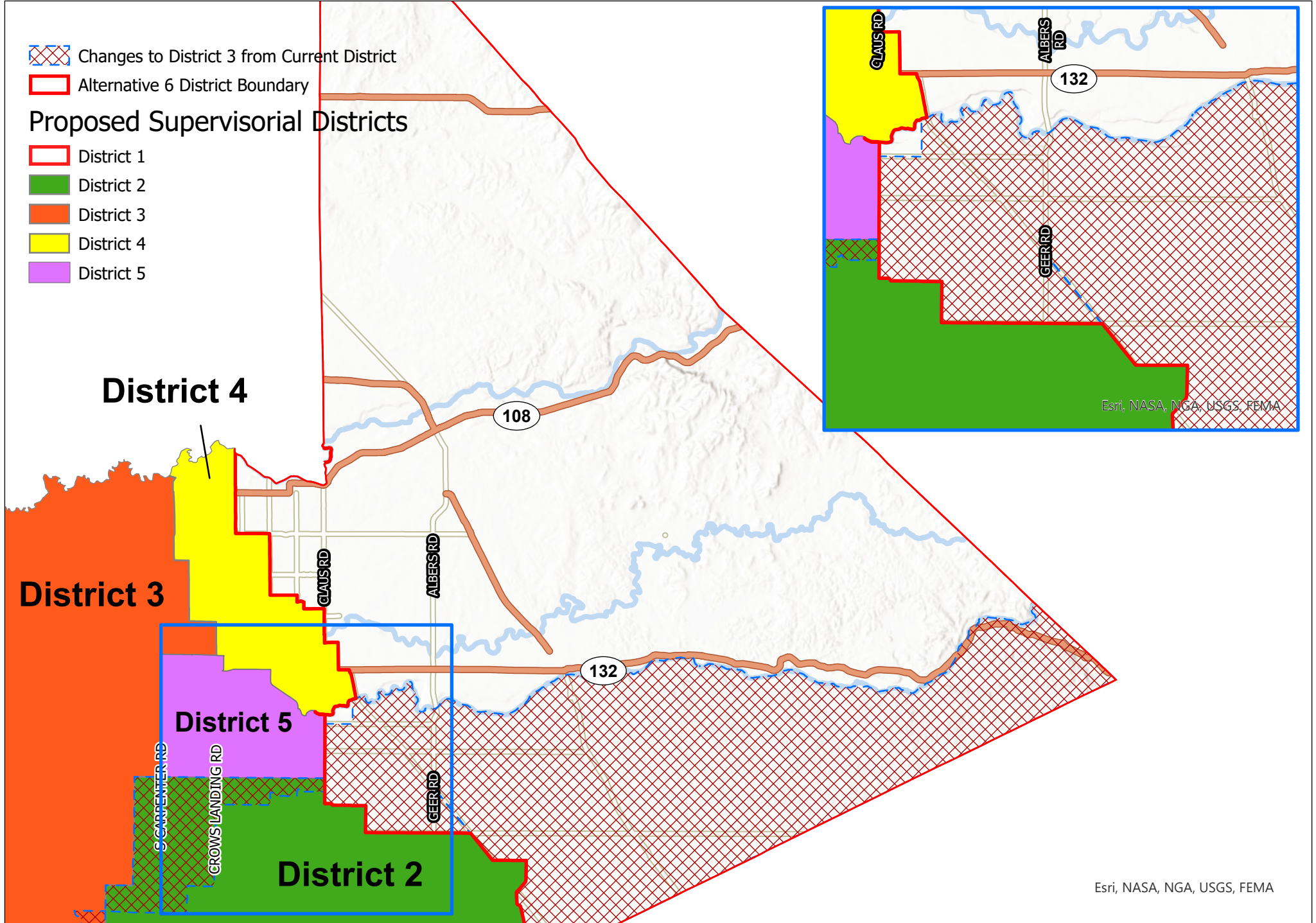
District 1

District 2

District 3

District 4

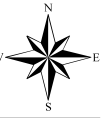
District 5



Esri, NASA, NGA, USGS, FEMA

Esri, NASA, NGA, USGS, FEMA

District 2 - Supervisorial Alternative Map 6



Changes to District 3 from Current District

Alternative 6 District Boundary

Proposed Supervisorial Districts

District 1

District 2

District 3

District 4

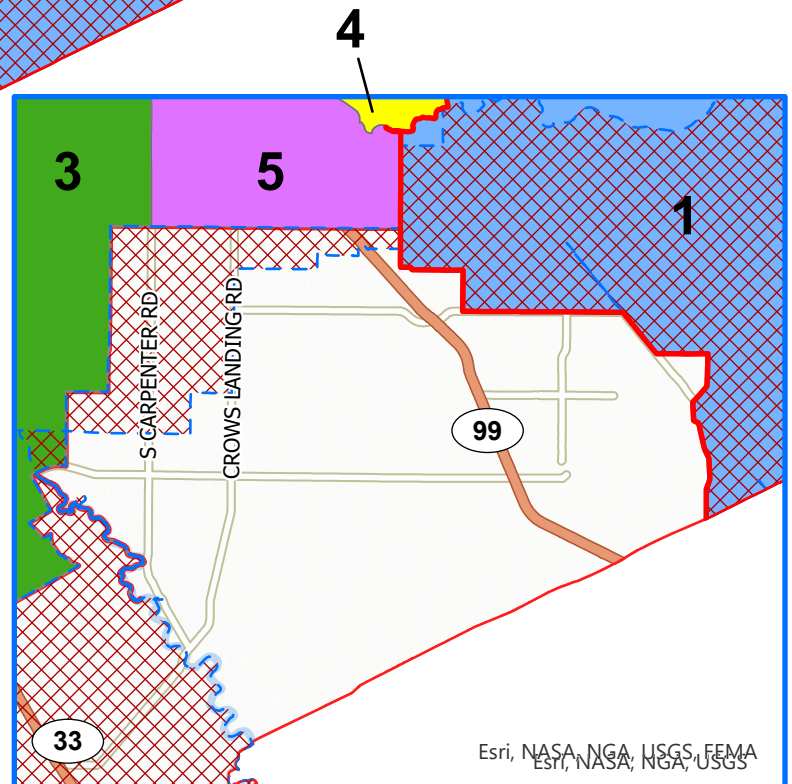
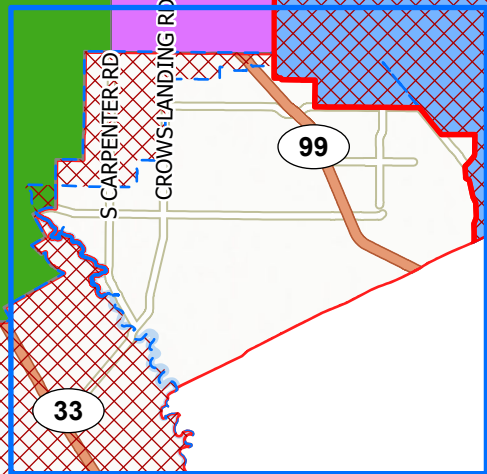
District 5

District 5

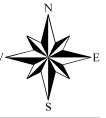
District 4

District 1

District 3



District 3 - Supervisorial Alternative Map 6



Changes to District 3 from Current District

Alternative 6 District Boundary

Proposed Supervisorial Districts

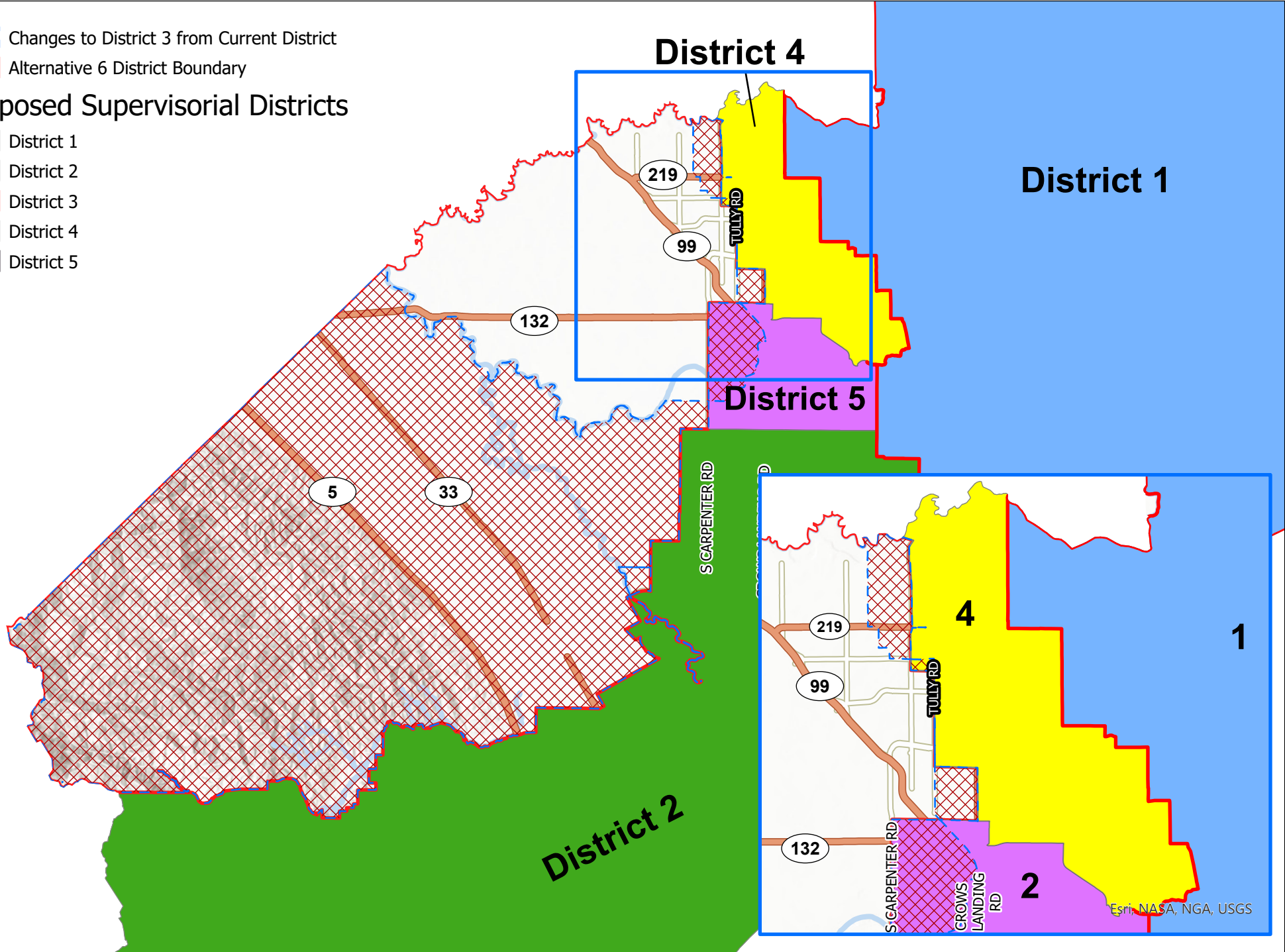
District 1

District 2

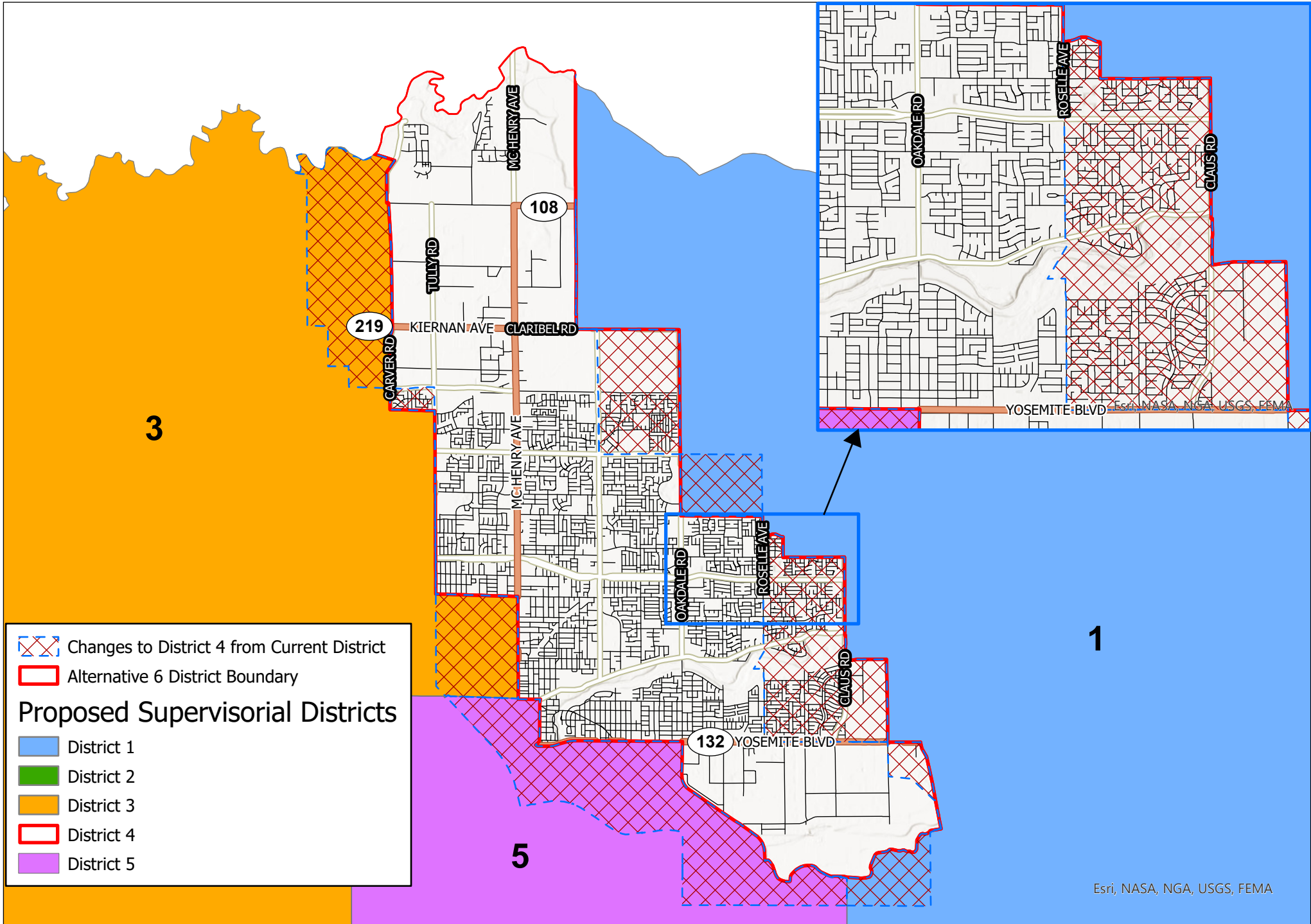
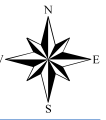
District 3

District 4

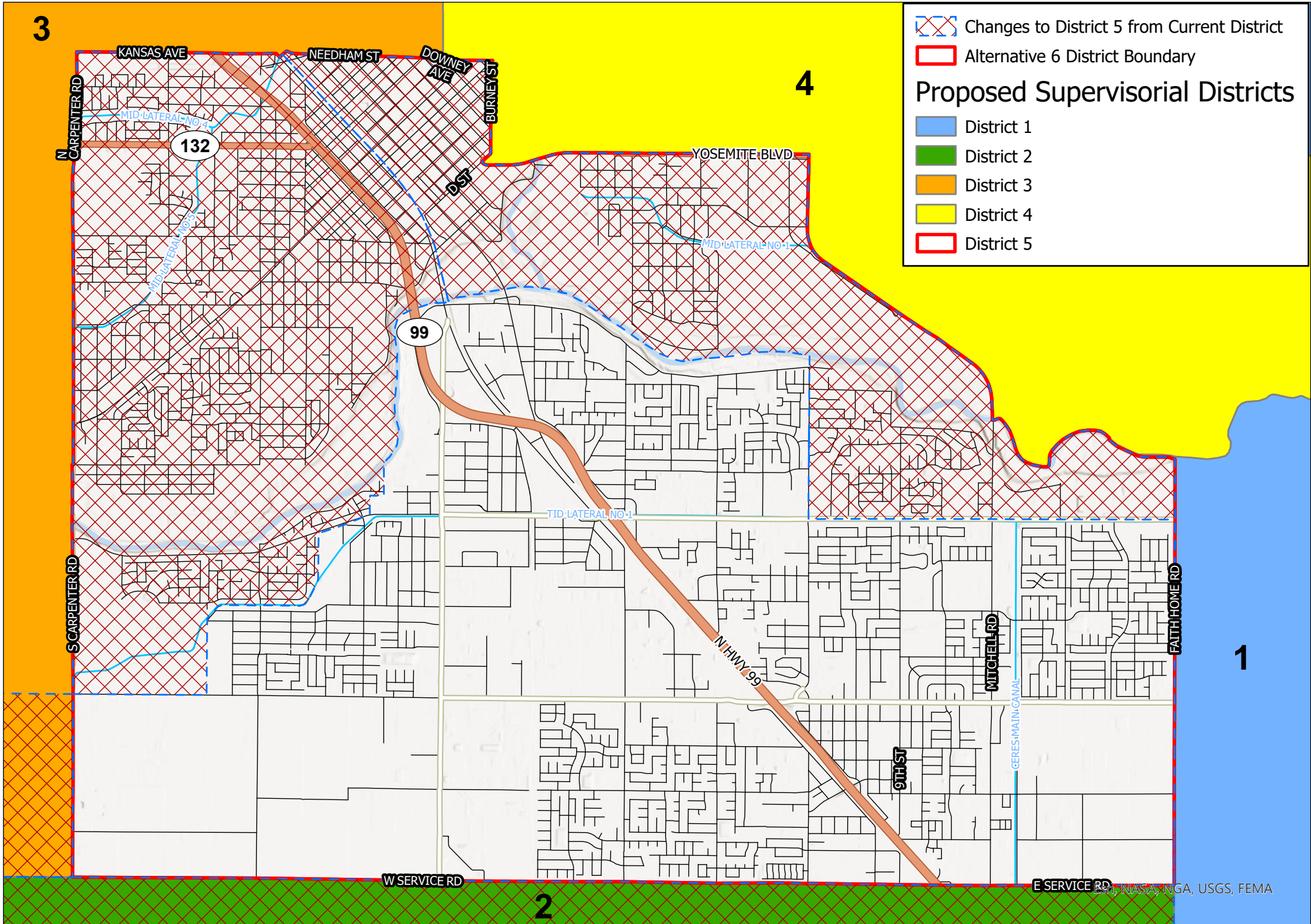
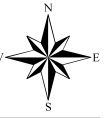
District 5



District 4 - Supervisorial Alternative Map 6



District 5 - Supervisorial Alternative Map 6



 Changes to District 5 from Current District
 Alternative 6 District Boundary
Proposed Supervisorial Districts
 District 1
 District 2
 District 3
 District 4
 District 5

Supervisory Alternative Map 6

Census 2020 Population with Race/Ethnicity and Citizen Voting Age Population 2019 (CVAP)

Supervisory	Population	Population Difference to Target Population	CRITERIA #1		Hispanic	% of Hispanic	NH White	% of NH White	NH Asian	% of NH Asian	NH Black or African American	% of NH Black or African American	NH Native Hawaiian & Other Pacific Islander	% of NH Native Hawaiian & Other Pacific Islander	NH American Indian & Alaska Native	% NH American Indian & Alaska Native		
			% Deviation from Target Population	Population												NH Other	% of NH Other	
District 1	110,619	-327	-0.29%		43,800	39.60%	53,078	47.98%	5,620	5.08%	1,642	1.48%	572	0.52%	533	0.48%	584	0.53%
District 2	111,014	68	0.06%		51,739	46.61%	46,004	41.44%	5,992	5.40%	1,845	1.66%	350	0.32%	490	0.44%	501	0.45%
District 3	111,182	236	0.21%		52,728	47.42%	38,910	35.00%	8,012	7.21%	4,450	4.00%	1,238	1.11%	501	0.45%	638	0.57%
District 4	110,486	-460	-0.41%		40,090	36.29%	51,244	46.38%	6,577	5.95%	4,208	3.81%	1,007	0.91%	649	0.59%	626	0.57%
District 5	111,429	483	0.44%		78,391	70.35%	19,382	17.39%	6,982	6.27%	2,395	2.15%	555	0.50%	471	0.42%	473	0.42%
Total Pop	554,730				266,748	48.09%	208,618	37.61%	33,183	5.98%	14,540	2.62%	3,722	0.67%	2,644	0.48%	2,822	0.51%

Supervisory	CVAP	CVAP % of Total Pop	Hispanic CVAP	CRITERIA #2		NH White CVAP	% of NH White CVAP	DOJ NH Asian CVAP	% of DOJ NH Asian CVAP	DOJ NH Black or African American CVAP	% of DOJ NH Black or African American CVAP	NH Native Hawaiian & Other Pacific Islander	% of NH Native Hawaiian & Other Pacific Islander	DOJ NH American Indian & Alaska Native	% DOJ NH American Indian & Alaska Native
				% of Hispanic CVAP	% of DOJ NH Black or African American CVAP										
District 1	69,464	62.80%	19,561	28.16%	43,132	62.09%	3,859	5.56%	921	1.33%	564	0.81%	1,012	1.46%	
District 2	69,723	62.81%	23,564	33.80%	40,030	57.41%	3,302	4.74%	1,530	2.19%	195	0.28%	886	1.27%	
District 3	69,493	62.50%	24,747	35.61%	34,072	49.03%	4,749	6.83%	3,632	5.23%	975	1.40%	933	1.34%	
District 4	74,706	67.62%	19,655	26.31%	45,776	61.27%	4,292	5.75%	3,293	4.41%	488	0.65%	913	1.22%	
District 5	57,574	51.67%	32,002	55.58%	17,515	30.42%	3,866	6.71%	2,712	4.71%	208	0.36%	705	1.22%	
Total Pop	340,960	61.46%	119,529	35.06%	180,525	52.95%	20,068	5.89%	12,088	3.55%	2,430	0.71%	4,449	1.30%	

554,730 Stanislaus County total population
 110,946 **Target Population** for each Supervisory District is the Total population (554,730) divided by the Total number of Supervisor Districts (5)